

**THE WORLD'S MOST INNOVATIVE  
GREEN BUILDING TECHNOLOGY**



**THINK  
GREEN**

**Transform  
hospitality into a  
greener experience**

# **CUSTOM SPACES 2024**

**MODULAR SYSTEMS, ACCESSORIES & LAYOUTS**

**Enjoy the comfort & sustainability  
in hospitality**

# W.S. SYSTEM



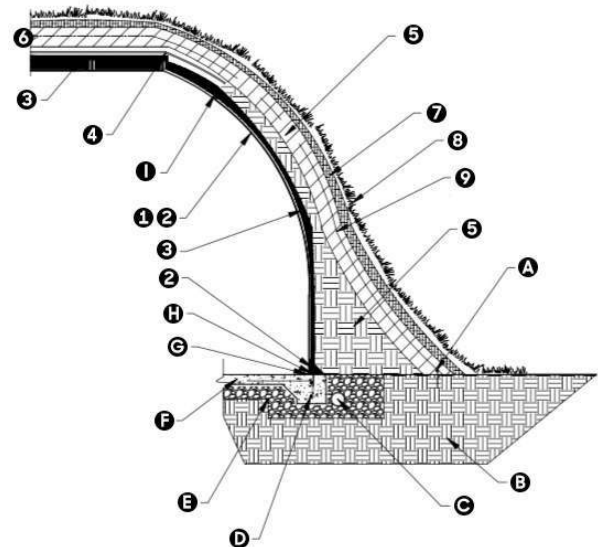
## Understanding Our Modular Patented Earth-Sheltered Framing Technology

Wonderful Structures is a patented and revolutionary modular construction system for Earth-Sheltered Structures made with cutting-edge polymeric compounds and aero-space technology which offers the ability to live to build in full integration with nature, with total comfort and high energy savings at very affordable prices.

Our “elevational” designs combine the protection and insulation of Earth berming with large facades orientated for passive solar gains. In homes, the floor plans are arranged to allow common areas and bedrooms to share heat and light.

The earth surrounding the structure provides excellent soundproofing, protects against the impact of extreme outdoor temperatures, requires less outside maintenance, blends into the landscape more harmoniously than conventional buildings, and offers exceptional protection against high winds, hailstorms, and natural disasters.

The interior of the units is constructed to take advantage of the solar gain and alternative energy efficiency, along with providing the convenience of traditional construction.



1. FRP panel	A. Earth anchors
2. Waterproofing membrane	B. Compacted earth
3. Insulation	C. French drain system
4. Rolled matrix drainage system	D. Basalt fiber rebar
5. Soil berm with reinforced mortar core	E. Compacted Gravel
6. Geocell soil confinement system	F. Microfiber reinforced concrete slab
7. Organic fiber erosion control layer	G. Foam seal sill plate gasket
8. Native vegetation & optional irrigation system	H. Wall fastening - Anchors & Adhesives
9. Galvanized steel aircraft cable tethers	I. Stainless steel flange connections



# ADVANTAGES



## ECO FRIENDLY CONSTRUCTION

- Made from high tech materials with exceptional durability and less environmental impact than traditional construction systems.

## ENERGY EFFICIENT

- Lower energy requirements and higher than conventional units. W.S. units can save up to 70% less energy vs standard homes.

## SPACIOUS ENVIRONMENTS

- High arched ceilings, open layouts, large windows and courtyards provide a spacious and ample feel even in the smallest unit sizes.

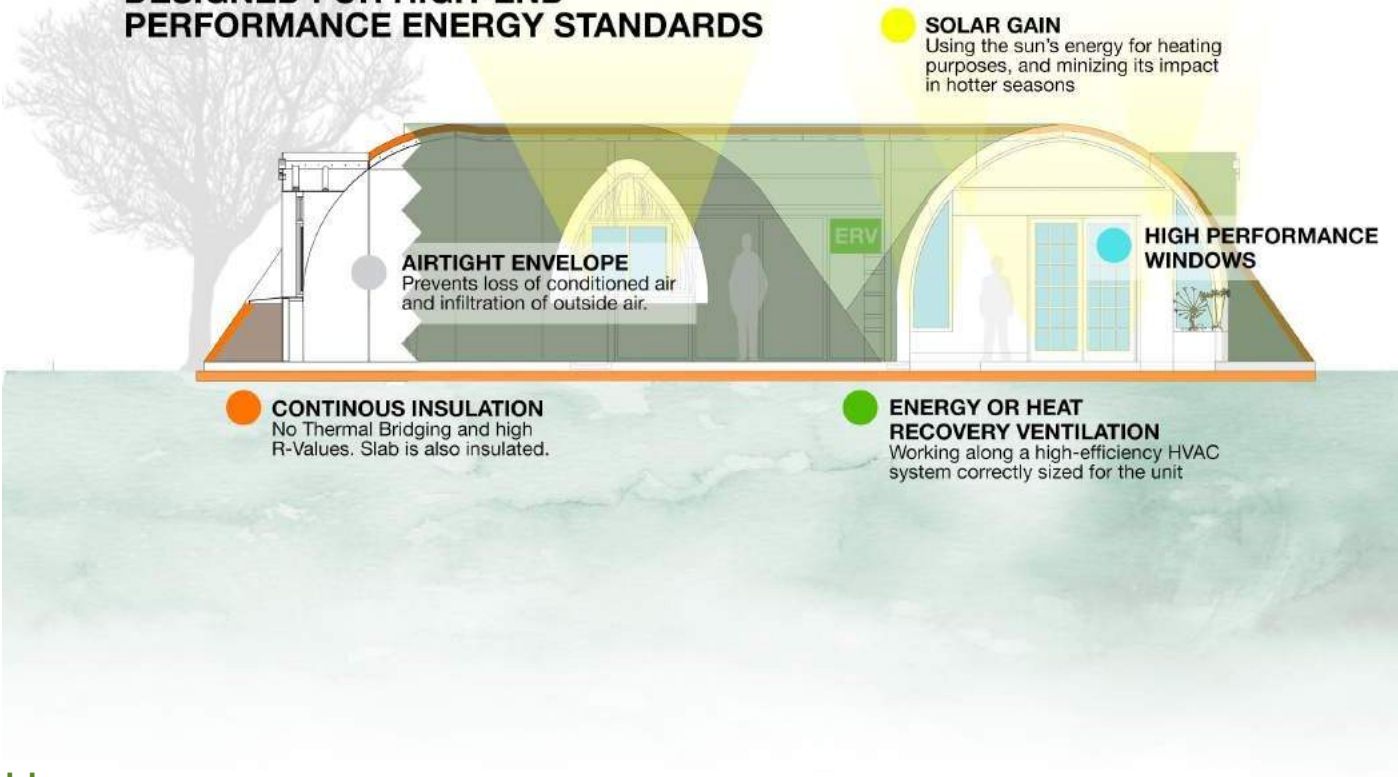
## INTEGRATES WITH NATURE

- Having the peripheral landscape “elevate” to cover the units integrates the volumes with its in a natural and organic way.

# PERFORMANCE



## DESIGNED FOR HIGH-END PERFORMANCE ENERGY STANDARDS



## HIGH EFFICIENCY UNITS

The W.S Modular system is designed to implement the best available energy saving technologies and techniques to deliver unparalleled efficiency under any environment.

## FAST CONSTRUCTION

W.S. units feature very fast construction times and very low maintenance costs. Our company provides the Structural Fiber Reinforced Polymer Component and the fastening systems and adhesives that make up the units. We also provide a complete set of configurations and/or floor plans of pre-planned or customized designs, with all the technical documentation required for permitting: Structural calculation reports, finite element models, foundation designs, and mechanicals.

## POSITIVE LIFESTYLE FOR RESIDENTS

Wellness Homes are a nascent industry that represents a dramatic shift that puts people's physical, mental and emotional wellness at the center of the conception, design, creation, and redevelopment of our homes and neighborhoods. Wonderful Structures technology is ideal for the construction of wellness real estate.

# CUSTOM SPACES



## INFINITE POSSIBILITIES

Need a custom space with W.S. technology? Now you can create your own personalized configuration for structures created with our system.

## CREATING YOUR OWN CUSTOM SPACE IS VERY EASY:

- 1) Select a base configuration
- 2) Select additional extensions, windows and door openings
- 3) Order your units

**DREAM IT,  
BUILD IT**

**Need architectural floor plans for your custom space?**  
Package includes personalized internal layouts and floor plans in AutoCAD.  
**Ask for a Quote**



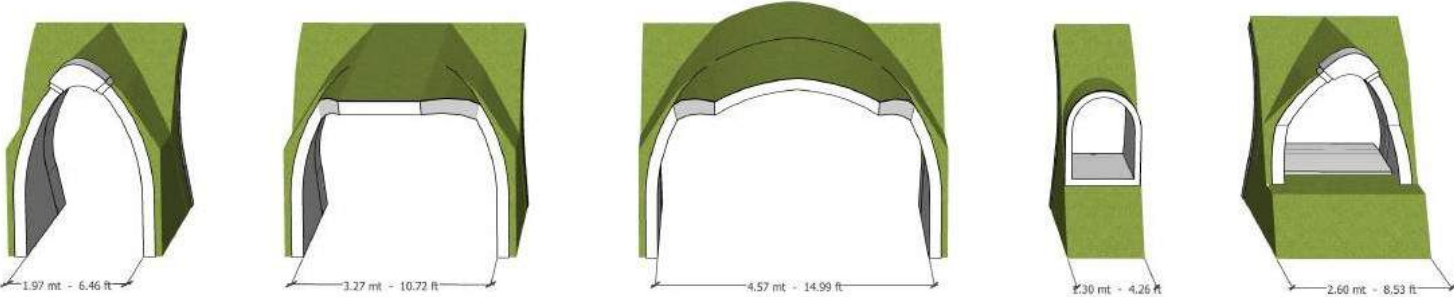
# OPTIONS



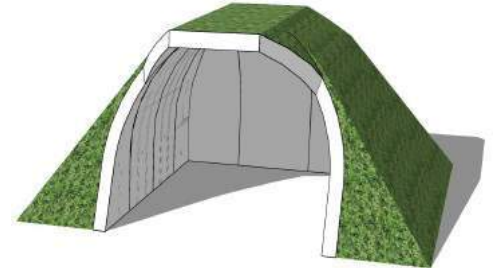
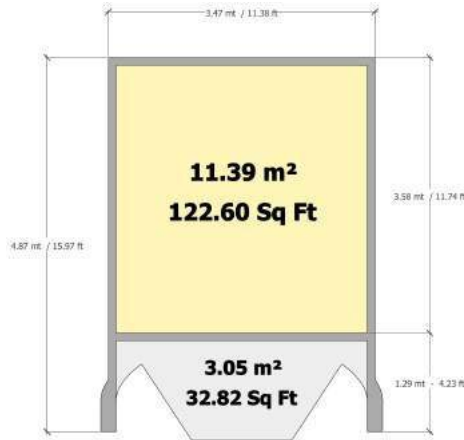
## DOOR AND WINDOW OPENINGS

The W.S. Modular system enables a myriad of personalized designs with extremely fast construction times. Our company provides the FRP components and fastening systems to create pre-configured layouts or customized designs. All systems include structural calculation reports and all technical testing to allow the units to be permitted in municipalities.

In addition, the units herein can be customized with these **5 models** of openings for doors and windows.

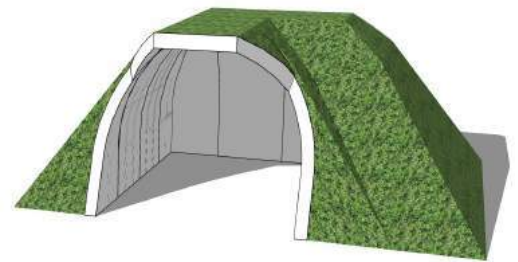
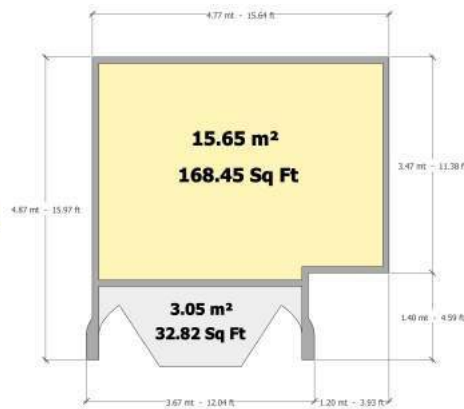


# SINGLE OPENING



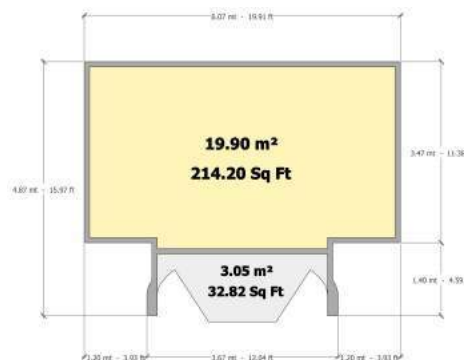
**Volumes:**  
8 un. per 20 ft Container or  
16 un. per 40 ft Container

**SKU: MSC001**



**Volumes:**  
6 un. per 20 ft Container or  
12 un. per 40 ft Container

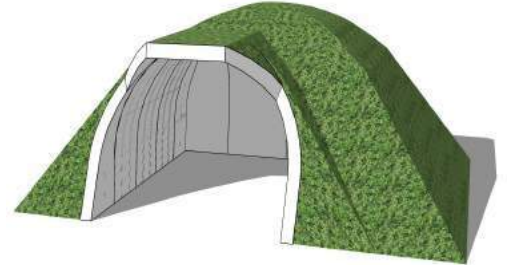
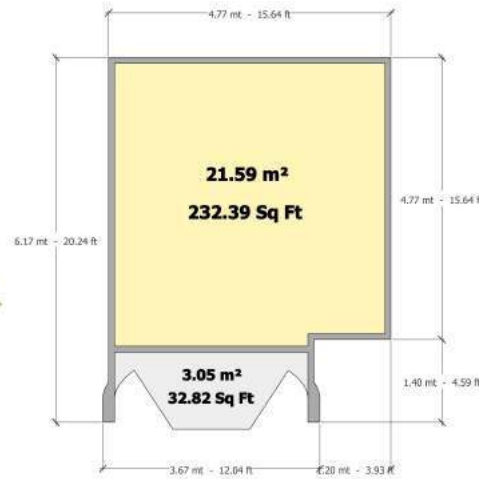
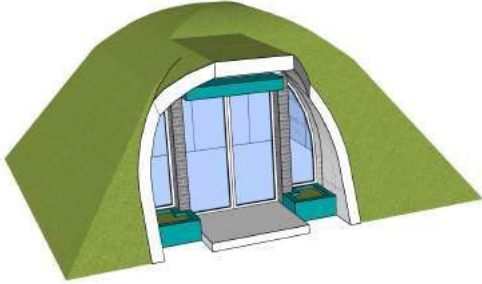
**SKU: MSC002**



**Volumes:**  
4 un. per 20 ft Container or  
8 un. per 40 ft Container

**SKU: MSC003**

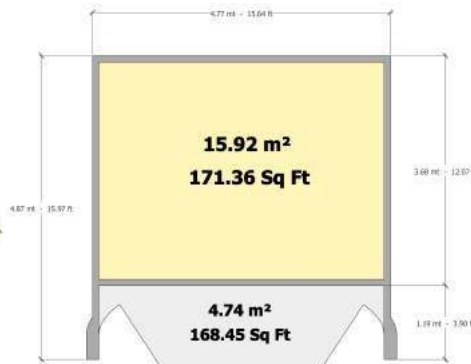
# SINGLE OPENING



**Volumes:**

4 un. per 20 ft Container or  
8 un. per 40 ft Container

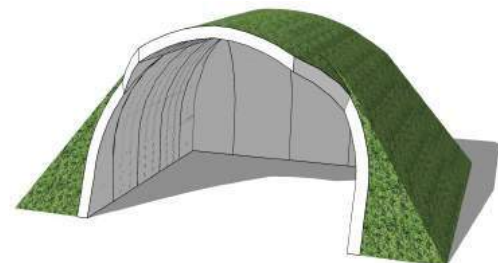
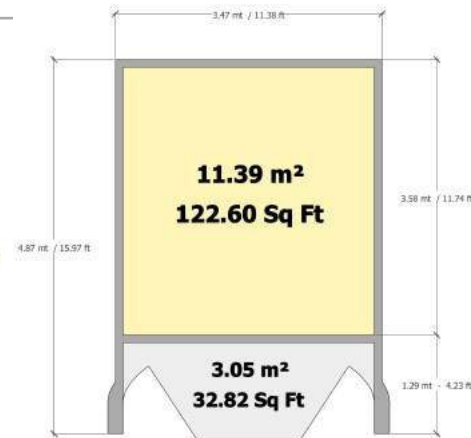
**SKU: MSC004**    **\$13,307**



**Volumes:**

6 un. per 20 ft Container or  
12 un. per 40 ft Container

**SKU: MSC005**



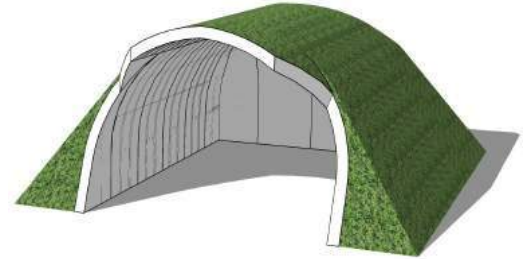
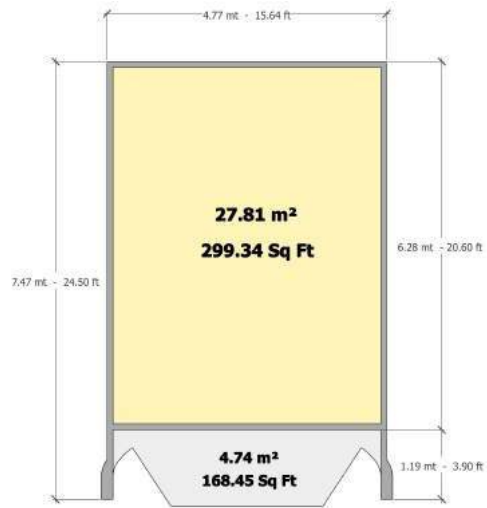
**Volumes:**

8 un. per 20 ft Container or  
16 un. per 40 ft Container

**SKU: MSC006**



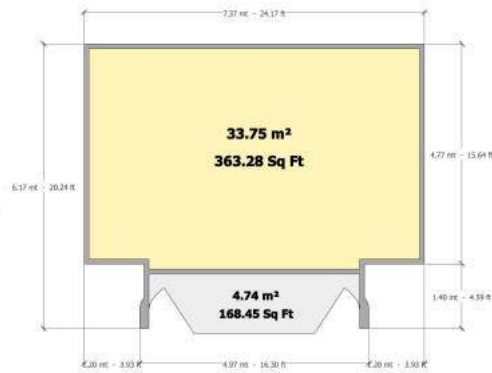
# SINGLE OPENING



**SKU: MSC007**

**Volumes:**

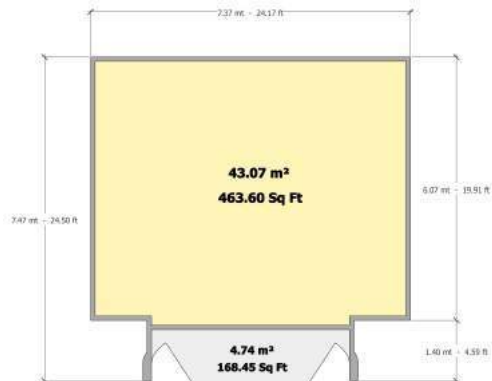
3 un. per 20 ft Container or  
6 un. per 40 ft Container



**SKU: MSC008**

**Volumes:**

3 un. per 20 ft Container or  
6 un. per 40 ft Container

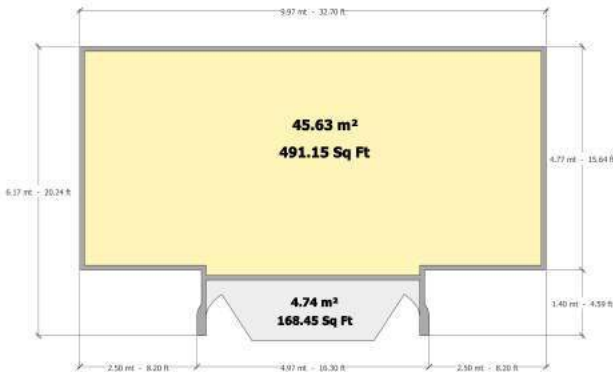


**SKU: MSC009**

**Volumes:**

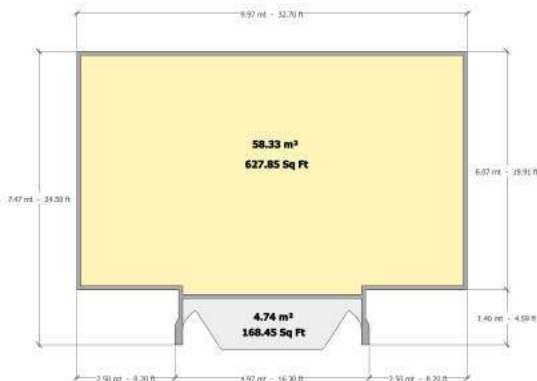
2 un. per 20 ft Container or  
4 un. per 40 ft Container

# SINGLE OPENING



**Volumes:**  
 2 un. per 20 ft Container or  
 4 un. per 40 ft Container

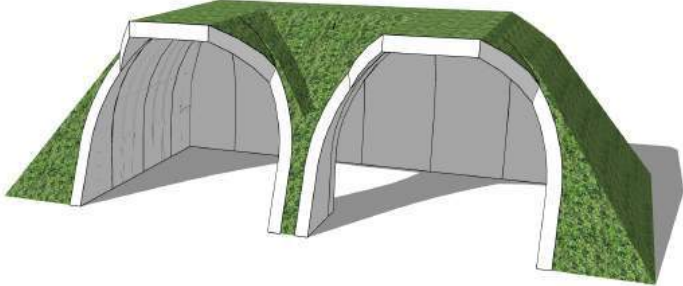
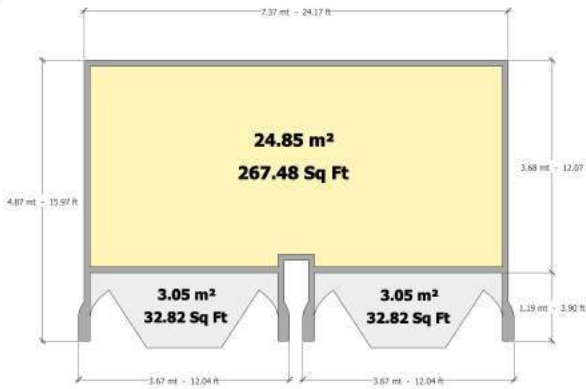
**SKU: MSC010**



**Volumes:**  
 2 un. per 20 ft Container or  
 4 un. per 40 ft Container

**SKU: MSC011**

# DOUBLE OPENINGS



**Volumes:**  
 4 un. per 20 ft Container or  
 8 un. per 40 ft Container

**SKU: MSC012**

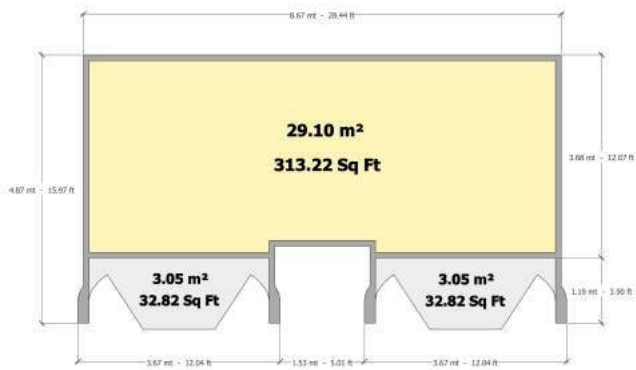
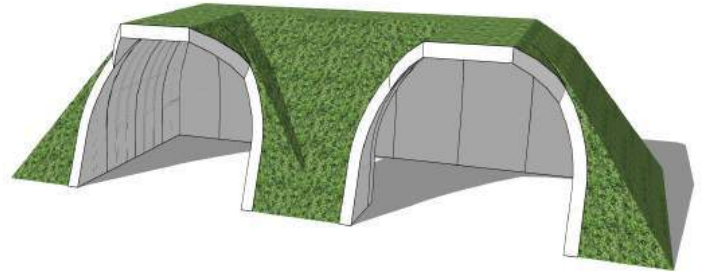


**Volumes:**  
 3 un. per 20 ft Container or  
 6 un. per 40 ft Container

**SKU: MSC013**

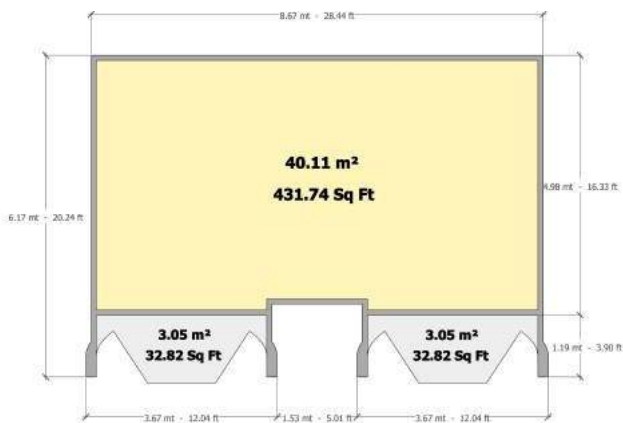


# DOUBLE OPENINGS



**Volumes:**  
 3 un. per 20 ft Container or  
 6 un. per 40 ft Container

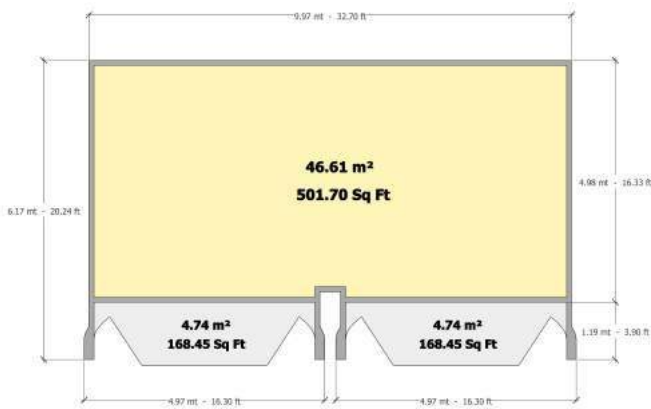
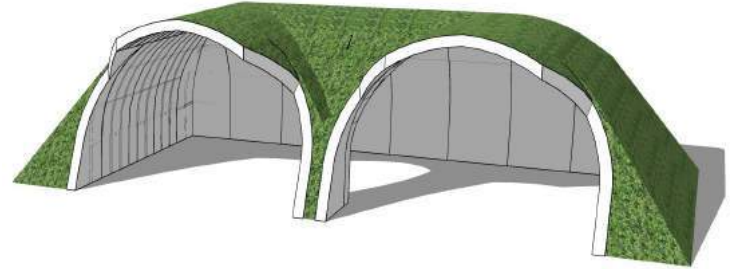
**SKU: MSC014**



**Volumes:**  
 2 un. per 20 ft Container or  
 4 un. per 40 ft Container

**SKU: MSC015**

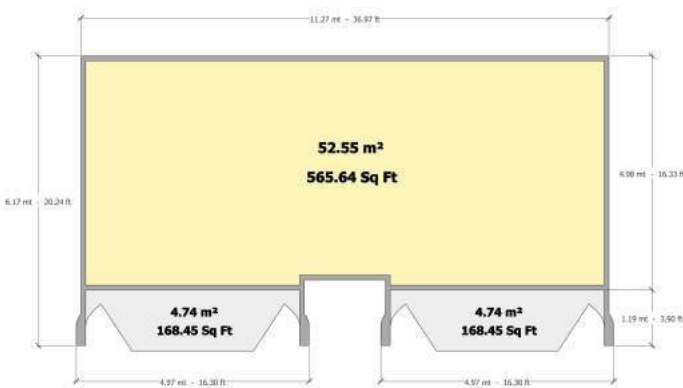
# DOUBLE OPENINGS



**Volumes:**

2 un. per 20 ft Container or  
 4 un. per 40 ft Container

**SKU: MSC016**

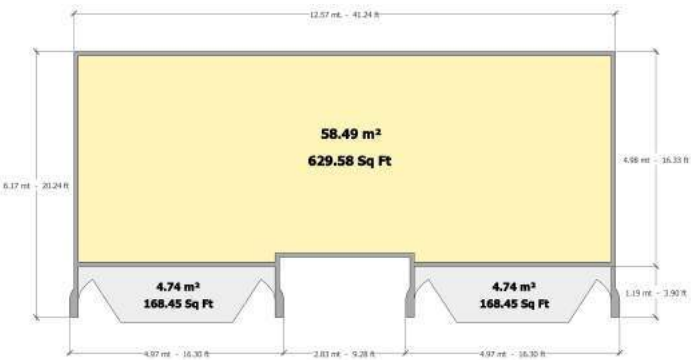


**Volumes:**

2 un. per 20 ft Container or  
 4 un. per 40 ft Container

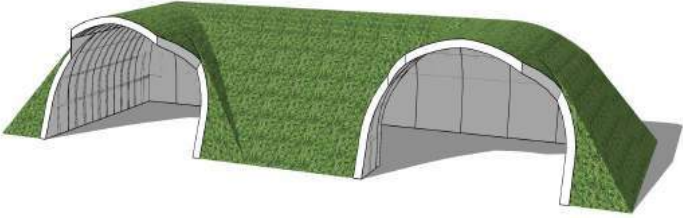
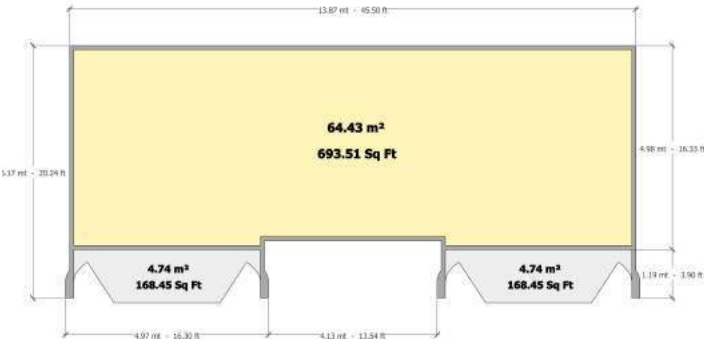
**SKU: MSC017**

# DOUBLE OPENINGS



**Volumes:**  
 2 un. per 20 ft Container or  
 4 un. per 40 ft Container

**SKU: MSC018**

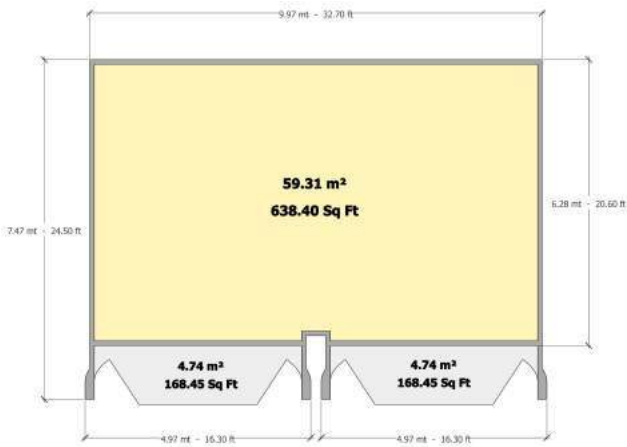
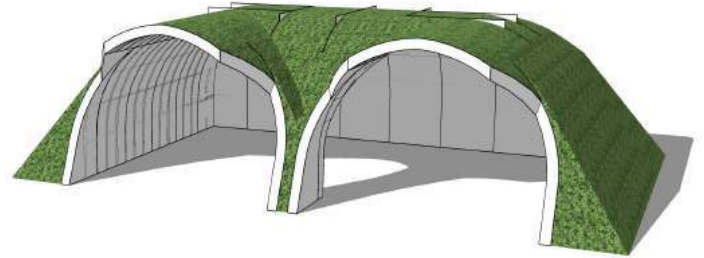


**Volumes:**  
 1.5 un. per 20 ft Container or  
 3 un. per 40 ft Container

**SKU: MSC019**

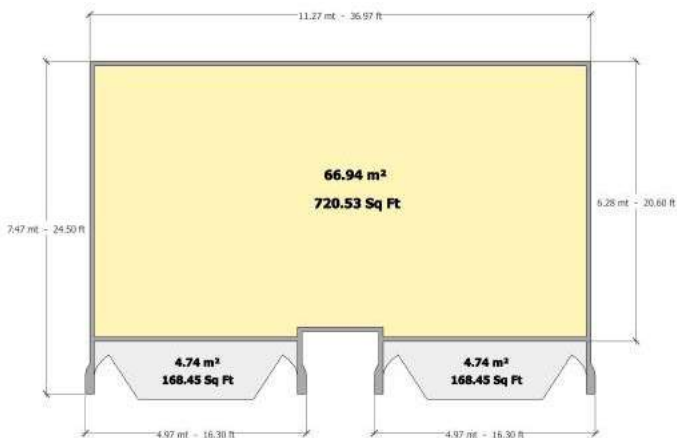


# DOUBLE OPENINGS



**Volumes:**  
2 un. per 20 ft Container or  
4 un. per 40 ft Container

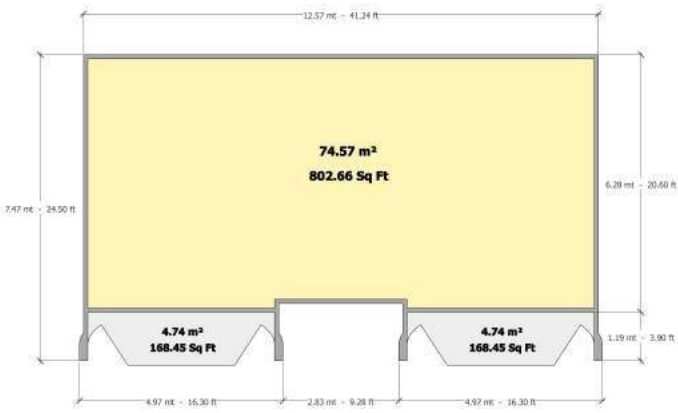
**SKU: MSC020**



**Volumes:**  
1.5 un. per 20 ft Container or  
3 un. per 40 ft Container

**SKU: MSC021**

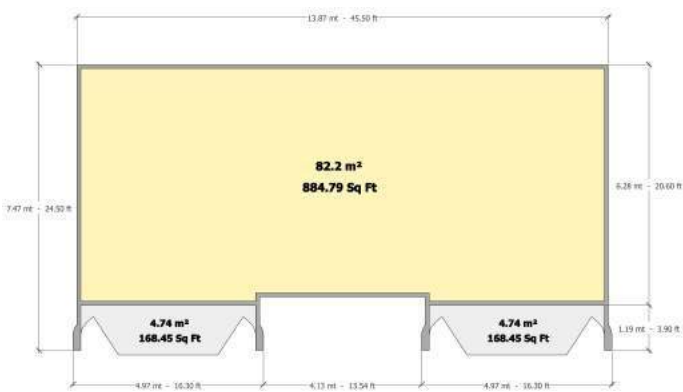
# DOUBLE OPENINGS



**Volumes:**

1.5 un. per 20 ft Container or  
3 un. per 40 ft Container

**SKU: MSC022**

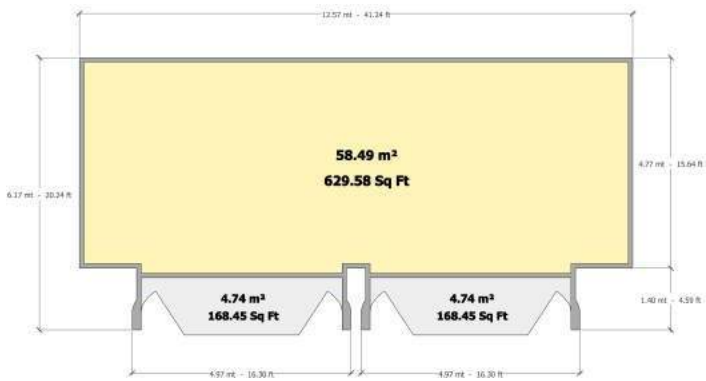
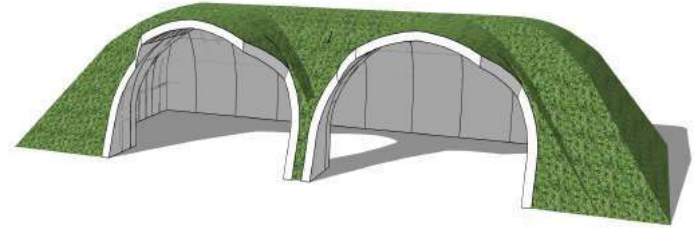


**Volumes:**

1 un. per 20 ft Container or  
2 un. per 40 ft Container

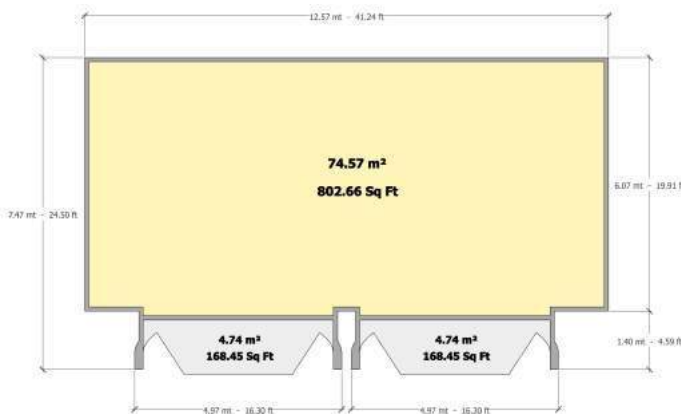
**SKU: MSC023**

# DOUBLE OPENINGS



**Volumes:**  
 2 un. per 20 ft Container or  
 4 un. per 40 ft Container

**SKU: MSC024**

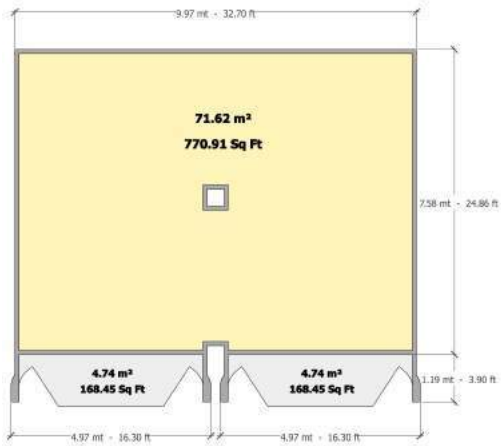


**Volumes:**  
 1.5 un. per 20 ft Container or  
 3 un. per 40 ft Container

**SKU: MSC025**



# DOUBLE OPENINGS

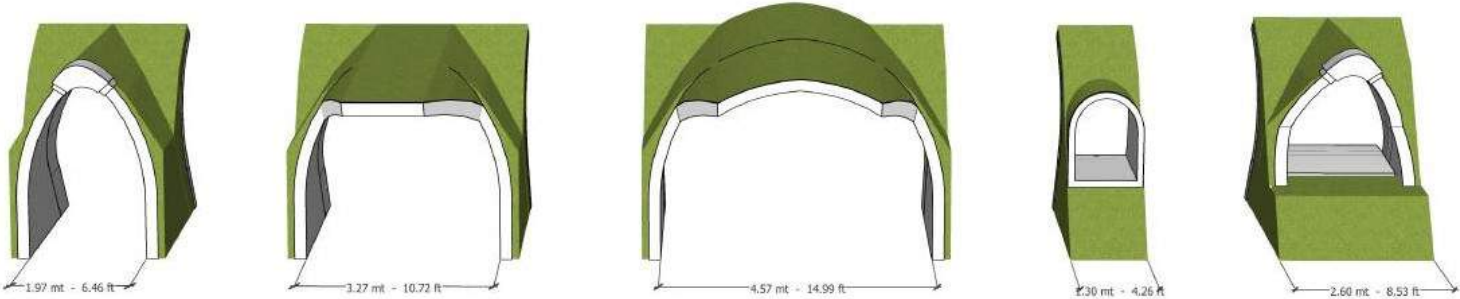


**Volumes:**  
 1.5 un. per 20 ft Container or  
 3 un. per 40 ft Container

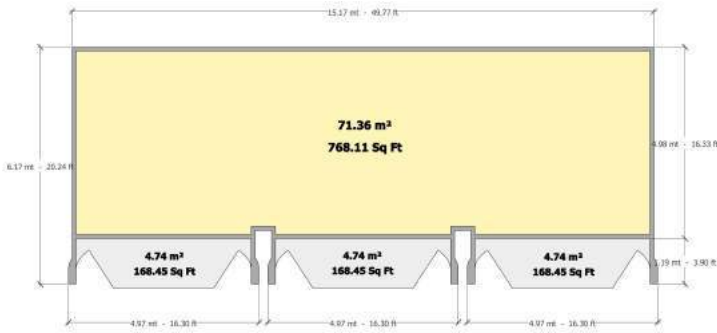
**SKU: MSC026**

## DOOR AND WINDOW OPENINGS

All units herein can be customized with these **5 models** of openings for doors and windows:



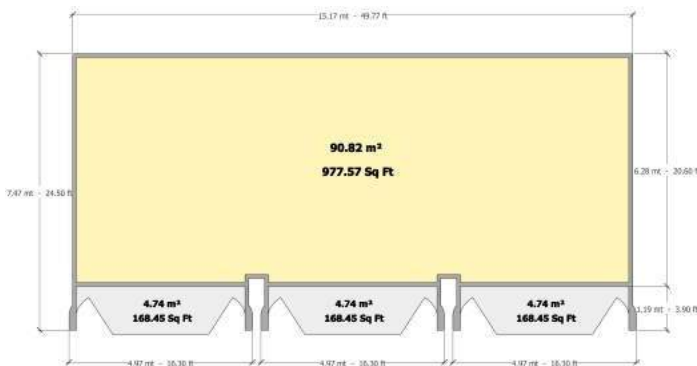
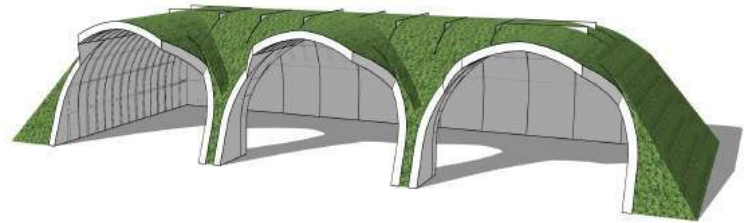
# TRIPLE OPENINGS



**Volumes:**

1.5 un. per 20 ft Container or  
3 un. per 40 ft Container

**SKU: MSC027**

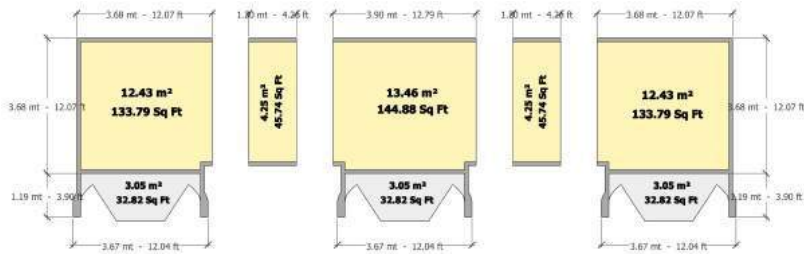


**Volumes:**

1 un. per 20 ft Container or  
2 un. per 40 ft Container

**SKU: MSC028**

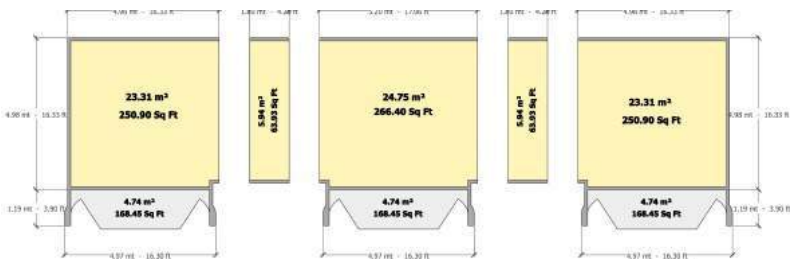
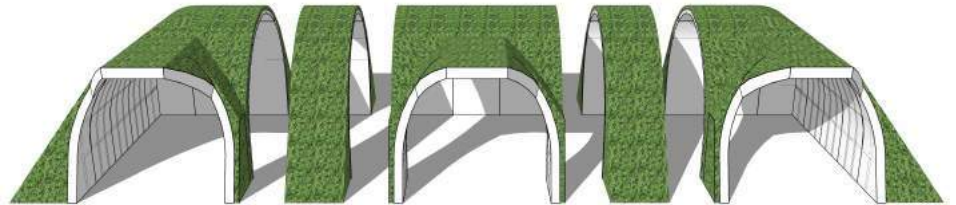
# EXPANDABLE SPACES



**Volumes:**

2 un. per 20 ft Container or  
4 un. per 40 ft Container

**SKU: MSC029**



**Volumes:**

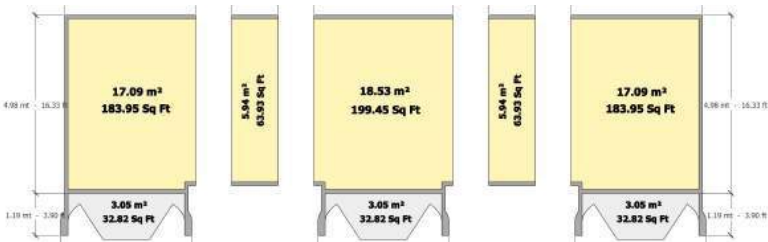
1 un. per 20 ft Container or  
2 un. per 40 ft Container

**SKU: MSC030**



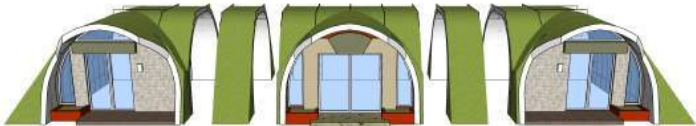
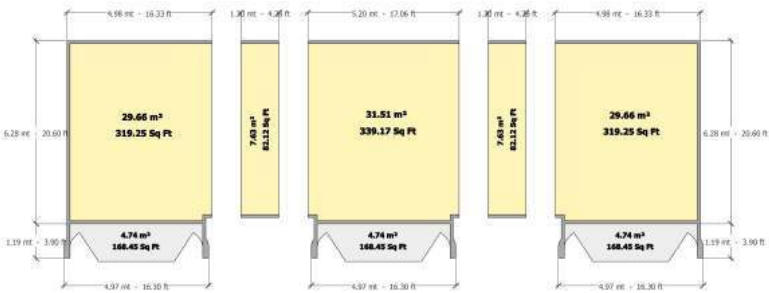
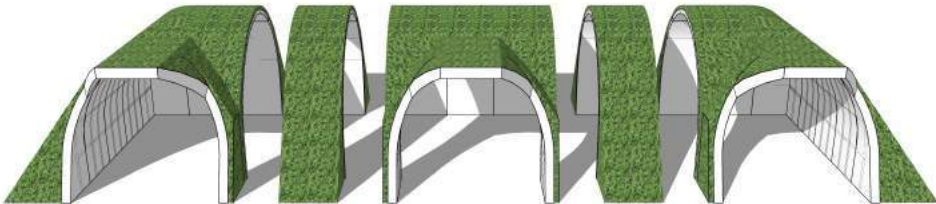


# EXPANDABLE SPACES



**Volume:**  
 2 un. per 20 ft Container or  
 4 un. per 40 ft Container

**SKU: MSC031**

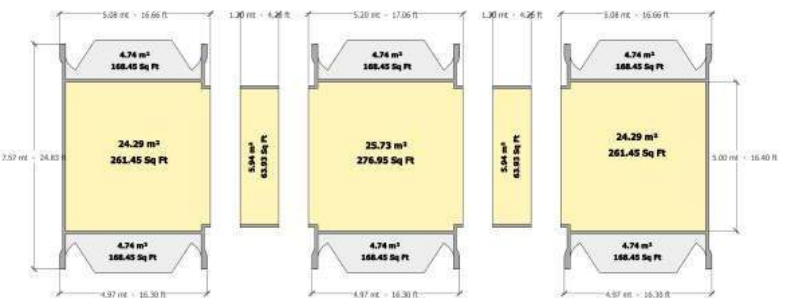


**Volume:**  
 1 un. per 20 ft Container or  
 2 un. per 40 ft Container

**SKU: MSC032**



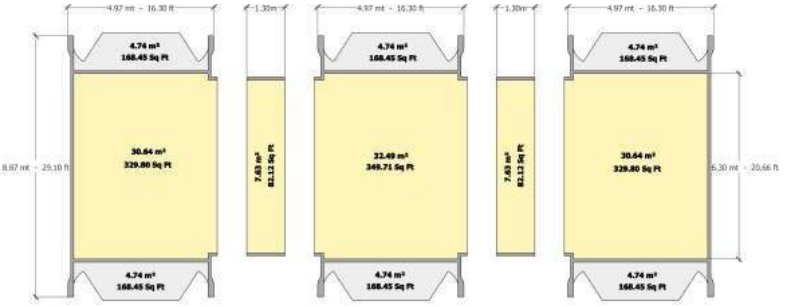
# EXPANDABLE SPACES



**Volume:**

1 un. per 20 ft Container or  
2 un. per 40 ft Container

**SKU: MSC033**



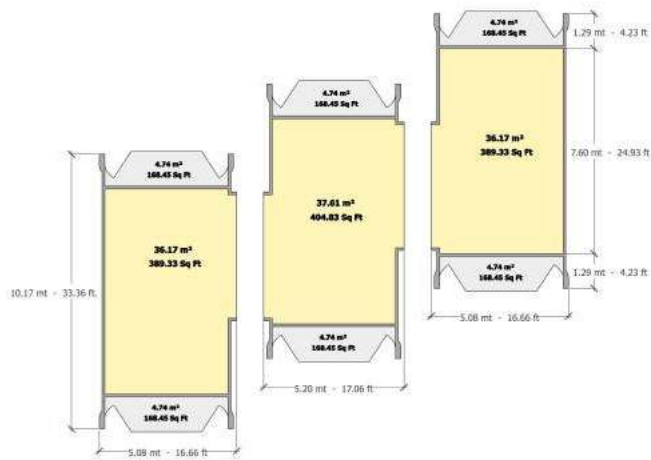
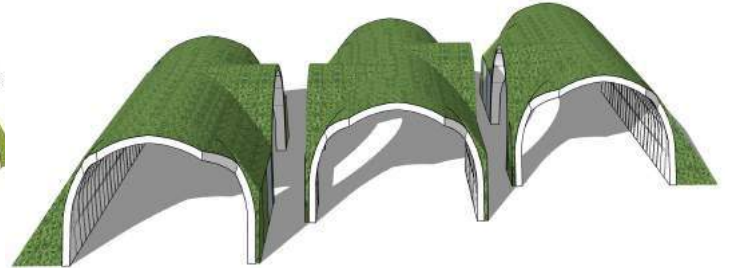
**Volume:**

1 un. per 20 ft Container or  
2 un. per 40 ft Container

**SKU: MSC034**



# EXPANDABLE SPACES



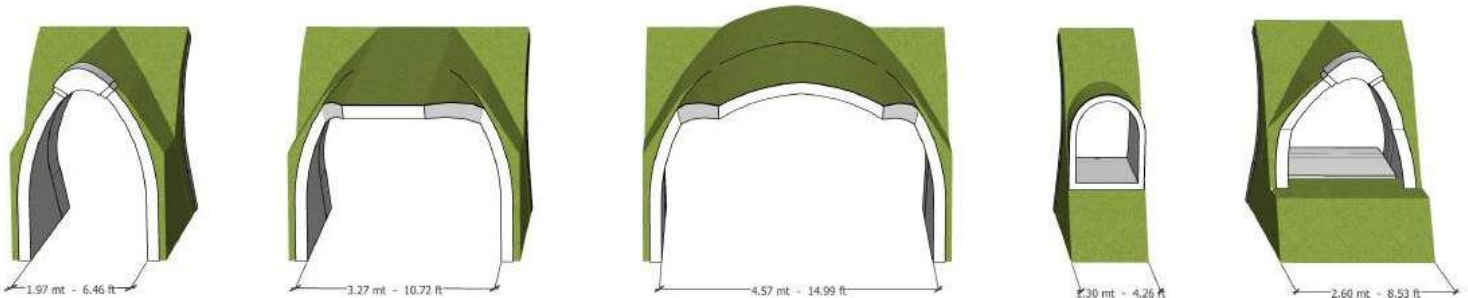
## Volume:

1 un. per 20 ft Container  
2 un. per 40 ft Container

**SKU: MSC035**

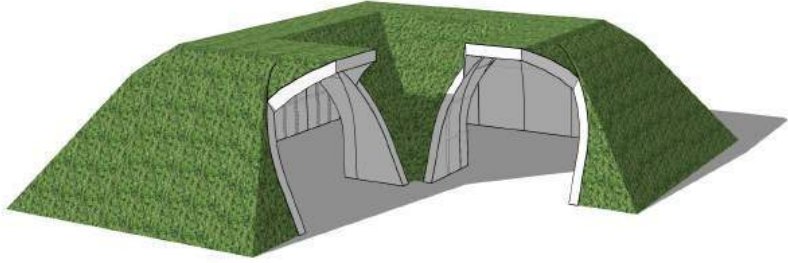
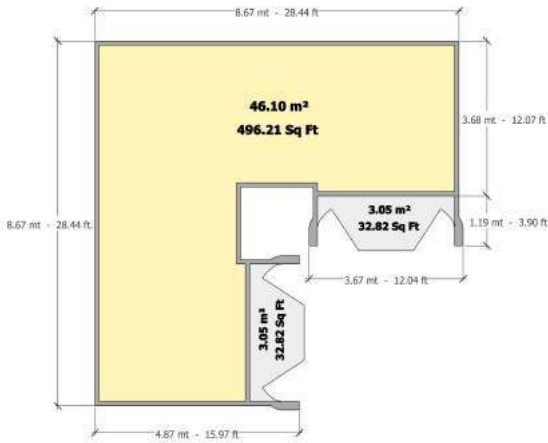
## DOOR AND WINDOW OPENINGS

All units herein can be customized with these **5 models** of openings for doors and windows:



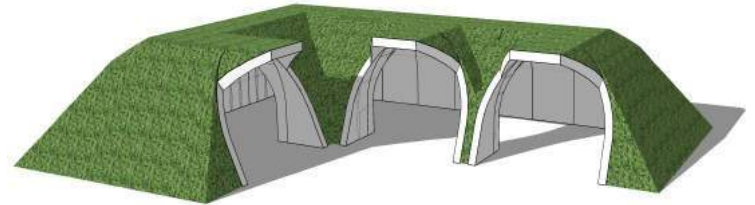
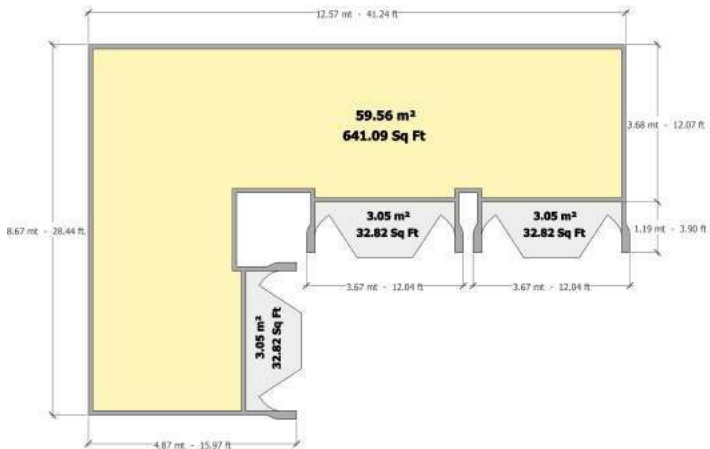


# “L” AND “U” SHAPED



**Volumes:**  
 2 un. per 20 ft Container or  
 4 un. per 40 ft Container

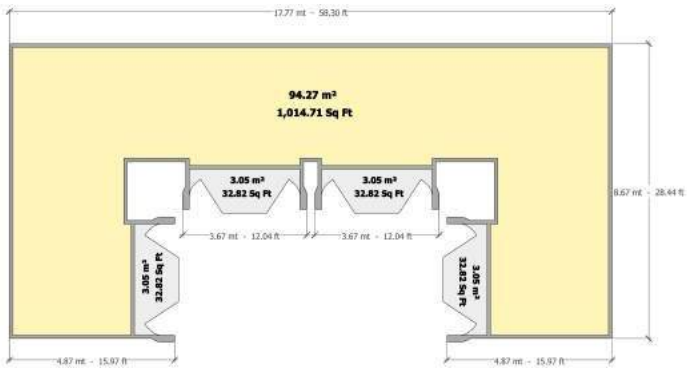
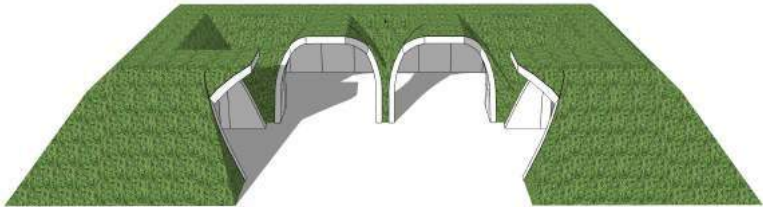
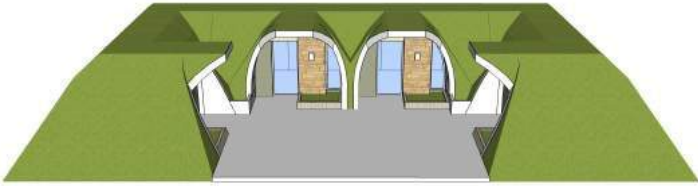
**SKU: MSC036**



**Volumes:**  
 2 un. per 20 ft Container or  
 4 un. per 40 ft Container

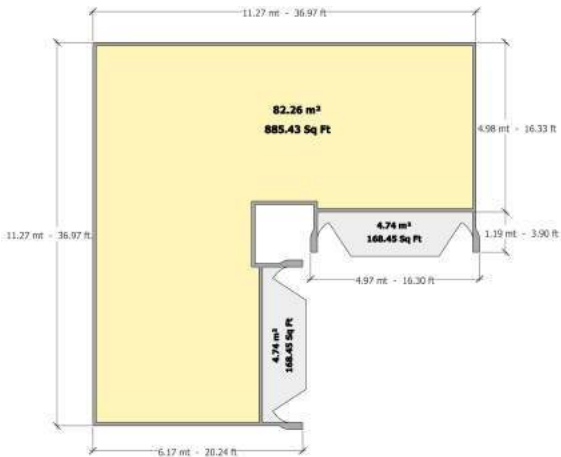
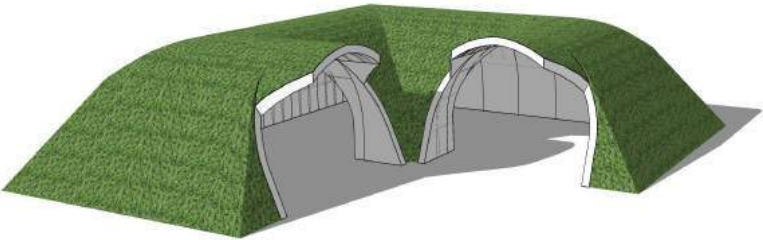
**SKU: MSC037**

# “L” AND “U” SHAPED



**Volumes:**  
 1 un. per 20 ft Container or  
 2 un. per 40 ft Container

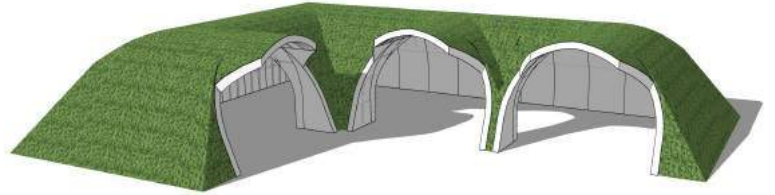
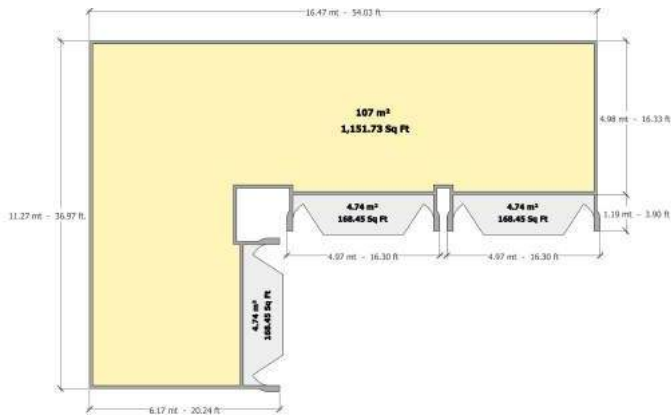
**SKU: MSC038**



**Volumes:**  
 1 un. per 20 ft Container or  
 2 un. per 40 ft Container

**SKU: MSC039**

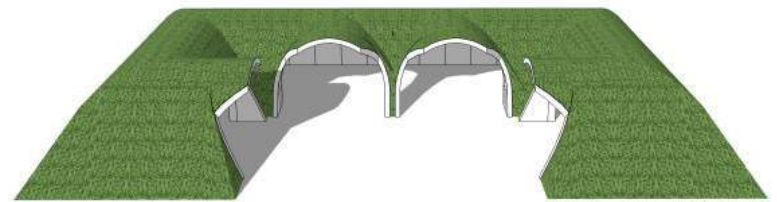
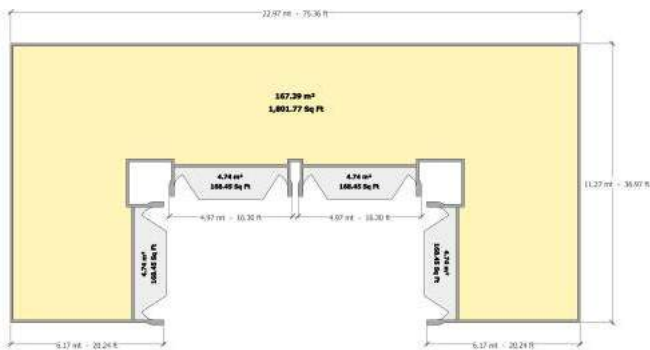
# “L” AND “U” SHAPED



## Volumes:

1 un. per 20 ft Container or  
2 un. per 40 ft Container

**SKU: MSC040**



## Volumes:

1 un. per 40 ft Container

**SKU: MSC041**





**We can create any design you want  
With our Modular Technology**



**CONTACT US**

**[www WonderfulStructures.com](http://www.WonderfulStructures.com)**