



KUUBIC

Housing Module Ready to be Inhabited

Below, we present a selection of design concepts and models achievable through **KUUBIC** technology.

These represent just a fraction of the extensive array of possibilities and configurations enabled by this highly adaptable construction technology for multi-purpose portable spaces.

Our modules are meticulously crafted from steel profiles, incorporating cutting-edge thermal insulation, and coated with the latest generation of fiber-reinforced polymers.

Remarkably, the space efficiency of **KUUBIC** allows the equivalent of 10 containers to be housed within a single 40-foot container, resulting in minimal transportation costs.

For bulk orders, **Wonderful Structures** extends the offer to cover shipping expenses,

KUUBIC stands as the forefront of the new generation of modular multi-use spaces, reflecting our commitment to innovation and excellence.

JUNIPER



ACACIA



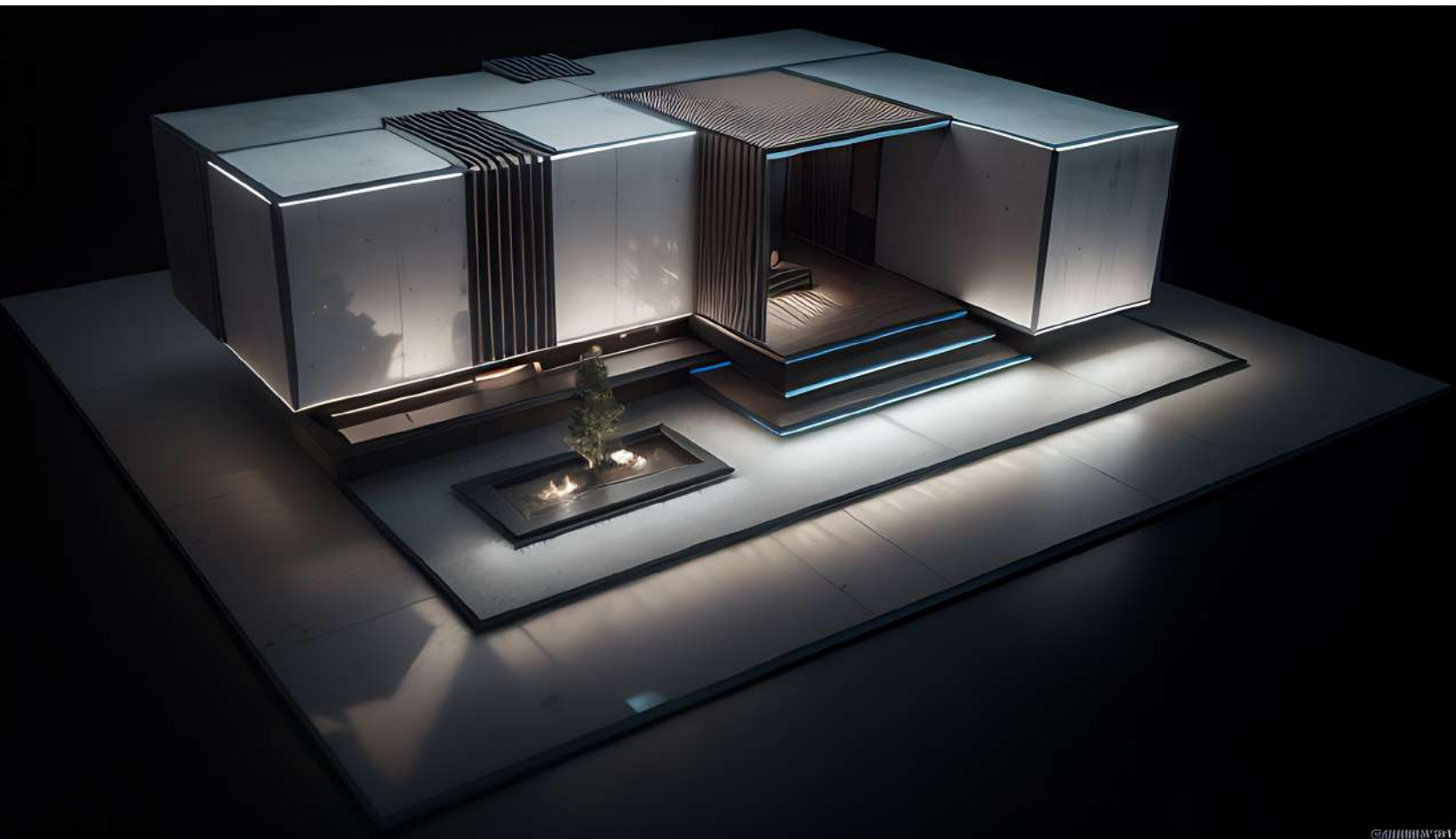
ALOE



HAZELNUT



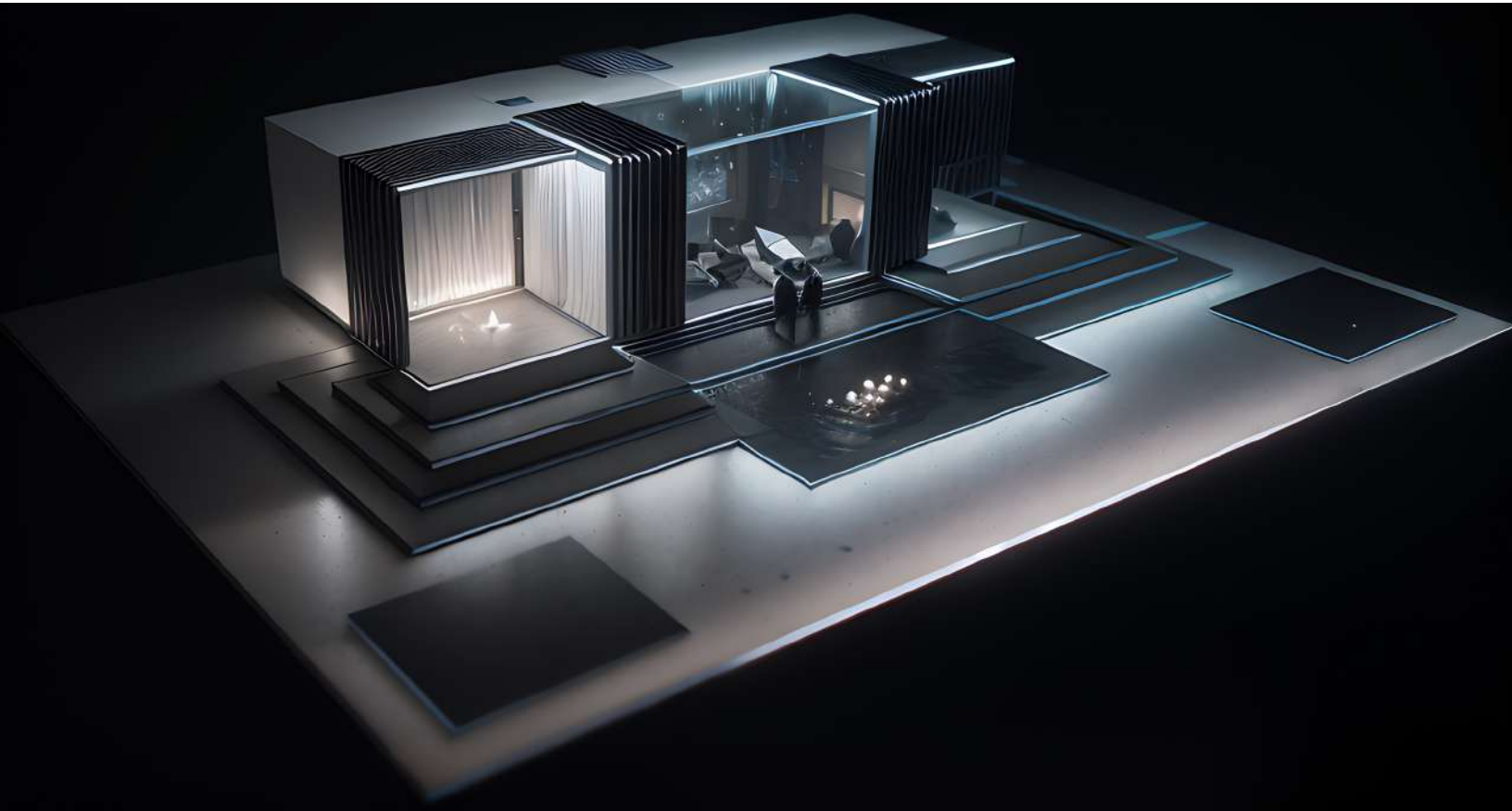
APPLE



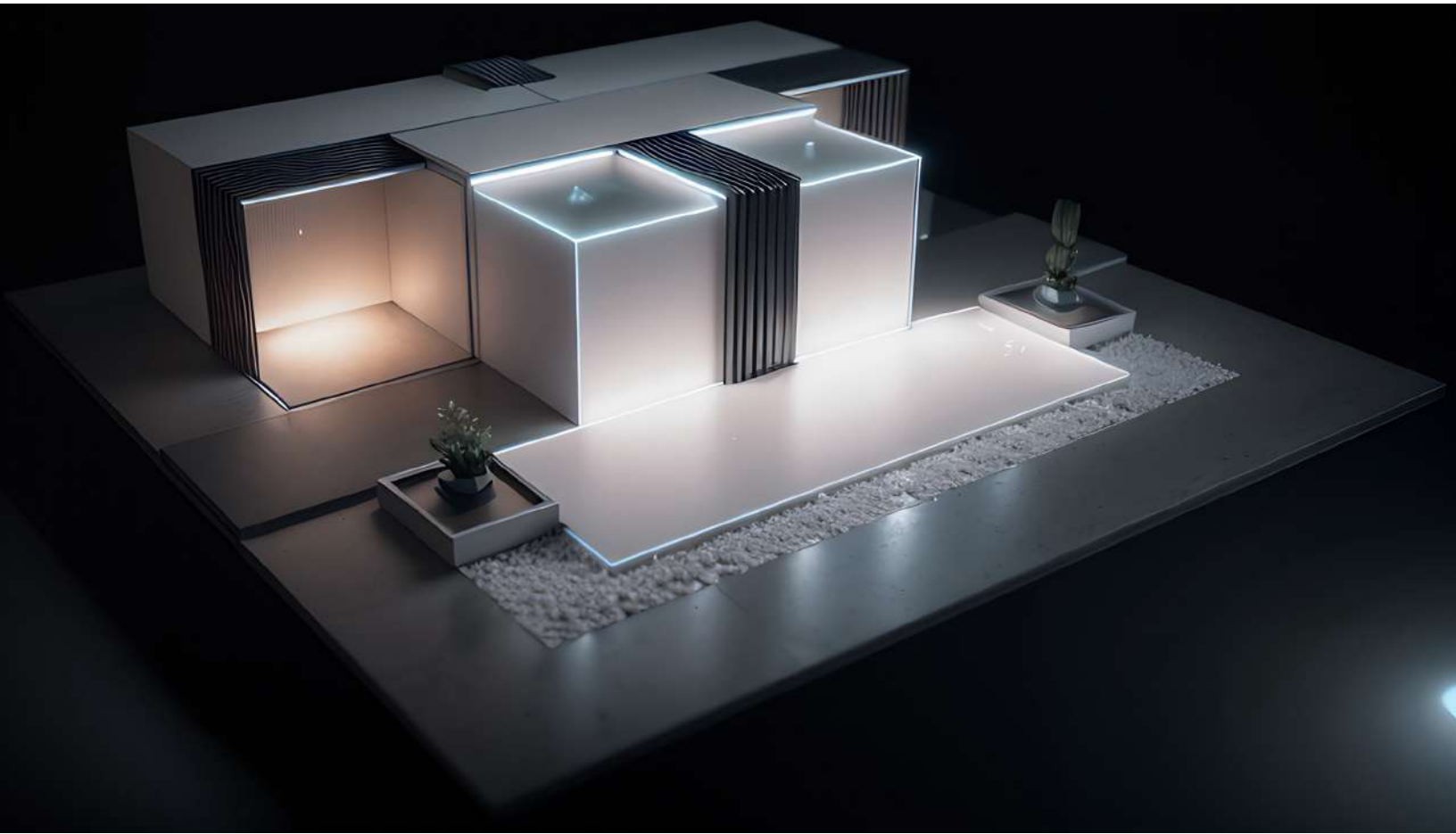
MAGNOLIA



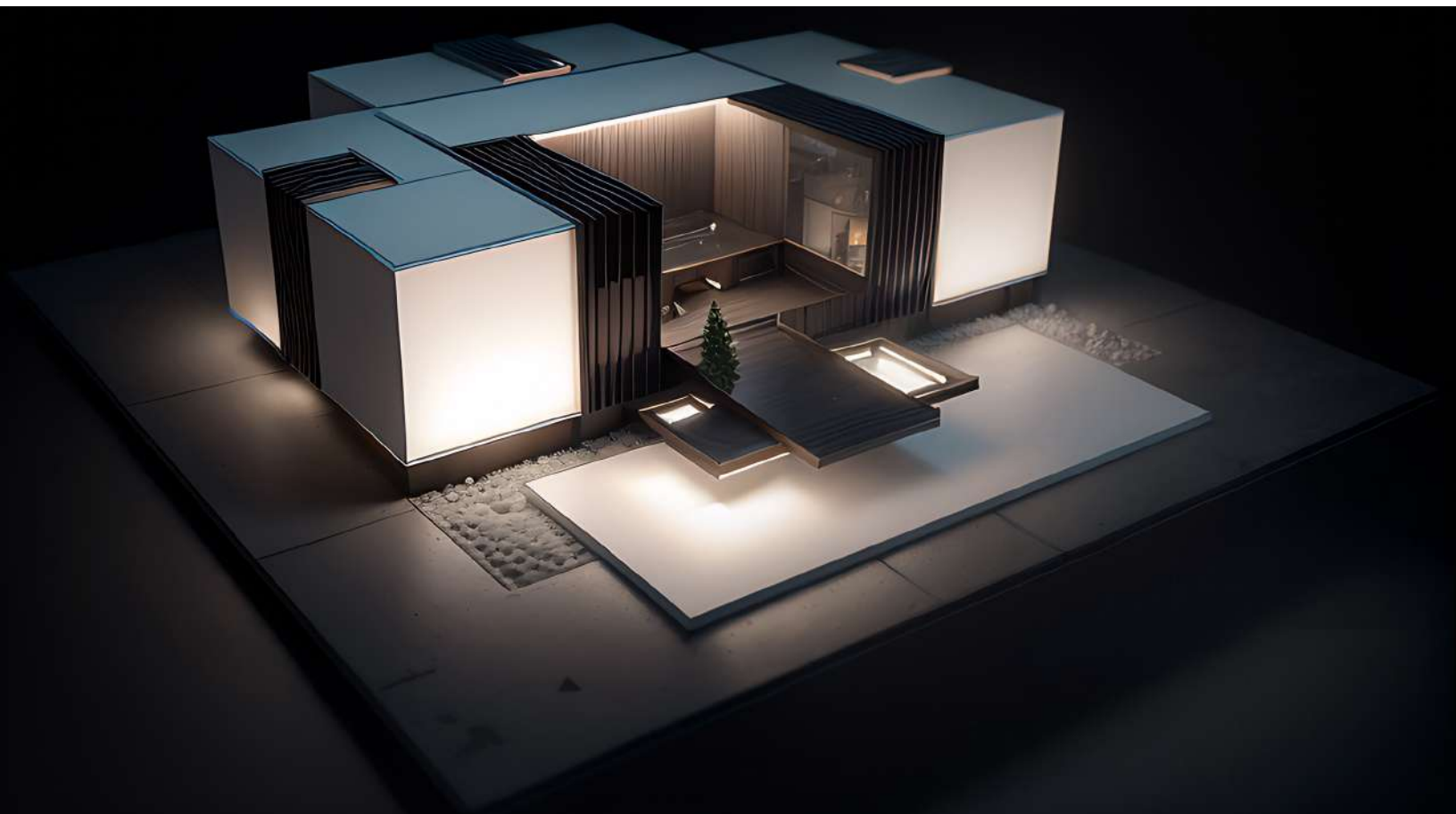
ROWAN



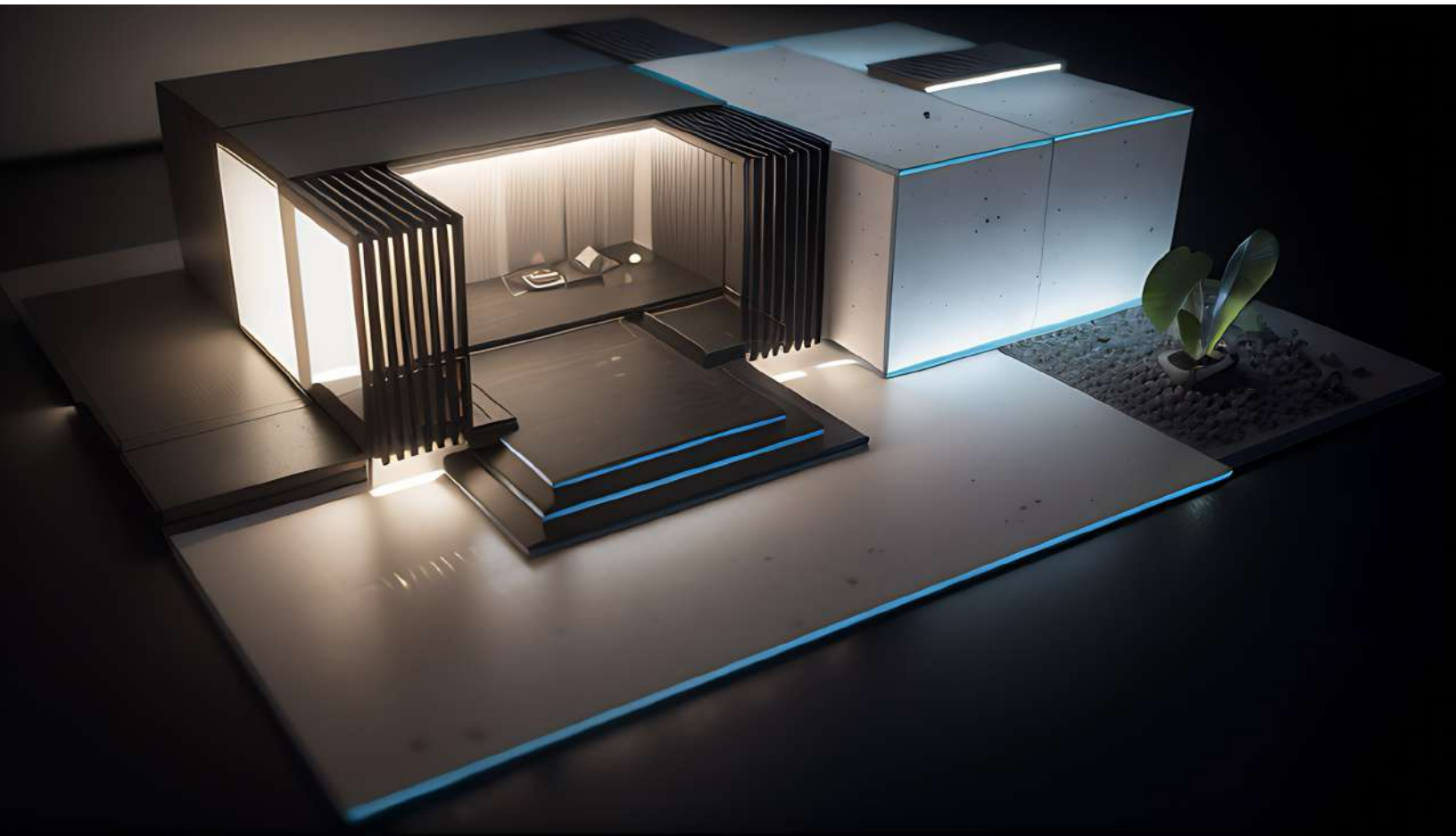
BANYAN



PINE



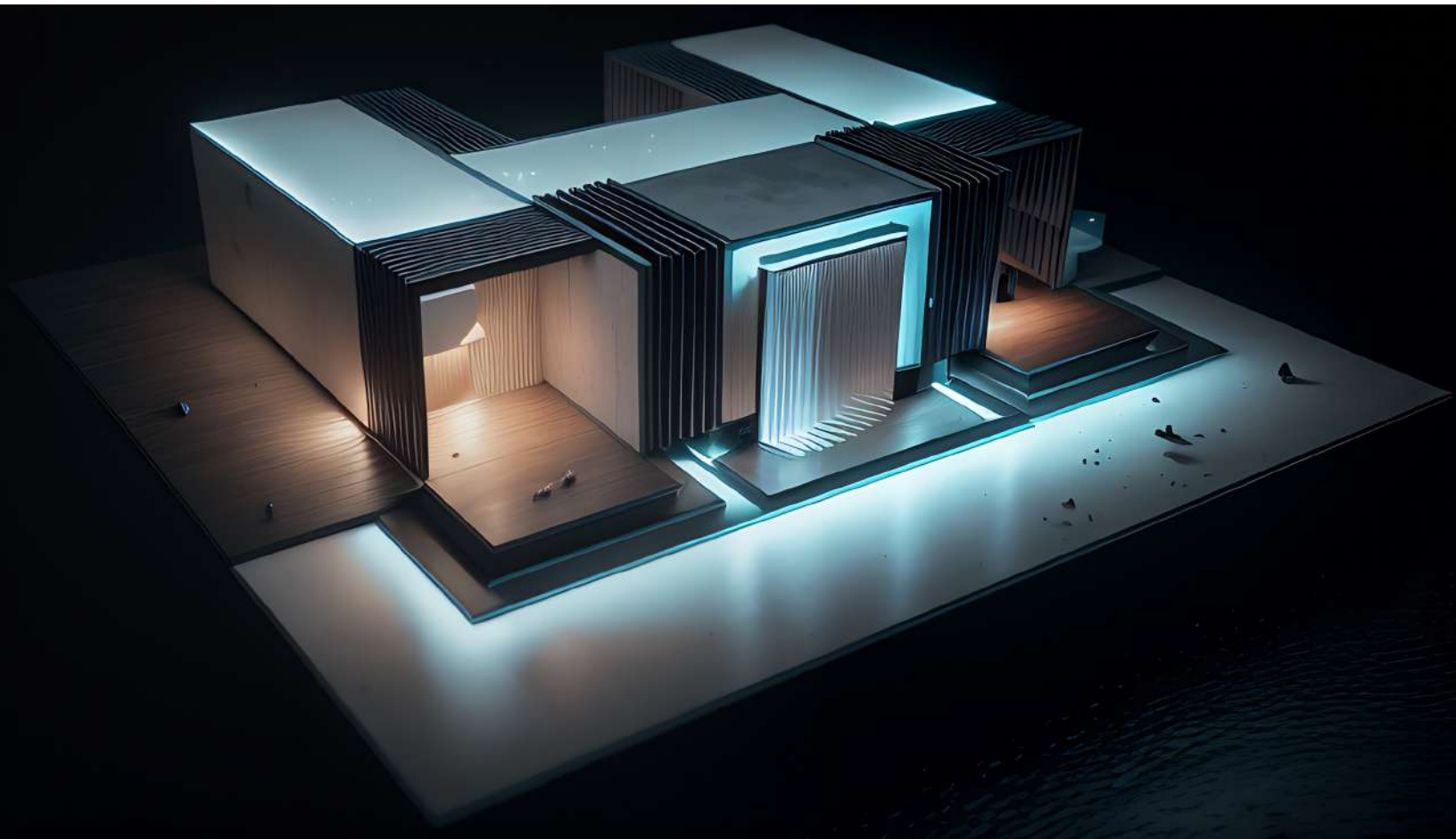
HAZEL



WILLOW



ELDERBERRY



LAUREL

