

At our company, we offer custom design that transforms every space into a true work of art, tailored to your dreams and aspirations. We don't believe in one-size-fits-all solutions; instead, we create environments that are as unique as the people who inhabit them. Our process begins by listening to you and deeply understanding your tastes, desires, and lifestyle, allowing us to capture your essence and infuse it into every corner of the project.

From the selection of materials to the arrangement of each element, we carefully attend to every detail to create an environment that is not only functional but also evokes emotions and inspires a sense of harmony and well-being.

Imagine a space where every texture, every color, and every shape tells a story; where each piece of furniture and each finishing touch has been chosen with precision and good taste to reflect your personality and elevate your daily experience.

With our custom design service, you'll receive not only a beautifully designed space, but also a place that becomes a unique and exclusive sanctuary, enveloping and inspiring you every time you walk through the door.

For us, design is not just about creating beautiful environments; it's about creating spaces that speak of you, represent you, and fill your days with beauty and satisfaction.

Below, we present some projects that have been designed through our custom design process, currently undergoing approval and construction permits in various countries.

## CONDOMINIUMS:

### TERRANA 1:

**ARCHITECTURAL PROGRAM**

# TERRANA ONE

The architectural project scope includes both residences (850) and underground shelters (1 per home). Each residence features ample bedrooms, generous living areas, communication systems with state-of-the-art equipment, and a great variety of amenities.

The urban project subdivides the property into 6 clusters developed in phases.

The urban fabric includes seven themed hotels with a total of 550 rooms:

- Hotel Central 1, 2, and 3.
- Hote! Domo
- Taino Polynesia
- Ultimo Taino
- Glamping

The roads divide into three classes:

- Main (central pier)
- Secondary (avenues and access to clusters), and
- Pedestrian (walkers and trails)

**Amenities include:**

- ✓ A surfing pool, conventional swimming pools
- ✓ Equestrian club
- ✓ Tennis and paddle courts
- ✓ Bicycle paths, trails, and jogging tracks.
- ✓ Botanical gardens, fruit forests, and large green areas surrounding the entire architecture, facilities, and each landmark of the complex.
- ✓ Airport, Heliport and a (possible) marina with 200 slips.

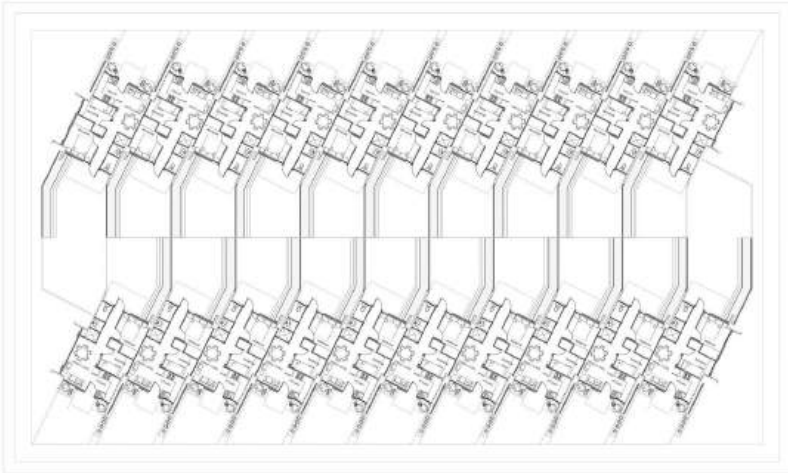




# ENVIRONMENTAL COMMUNITY - PUERTO RICO:

Residential communities around the globe are undergoing a transformative evolution, with a growing focus on innovation, sustainability, and regenerative practices. These neighborhoods are being designed not only to meet the immediate needs of their residents but also to contribute positively to the environment and the broader ecosystem. They are integrating systems that produce healthy, locally-grown food, harness renewable energy sources, and purify the air. Advanced water conservation technologies are being implemented, ensuring minimal waste and efficient use of resources.

As a result, these communities are becoming net positive, meaning they generate more energy, clean air, and resources than they consume, offering significant benefits both to their residents and to the planet as a whole. These developments are paving the way for a future where the built environment works in harmony with nature, fostering healthier lifestyles and reducing humanity's ecological footprint.

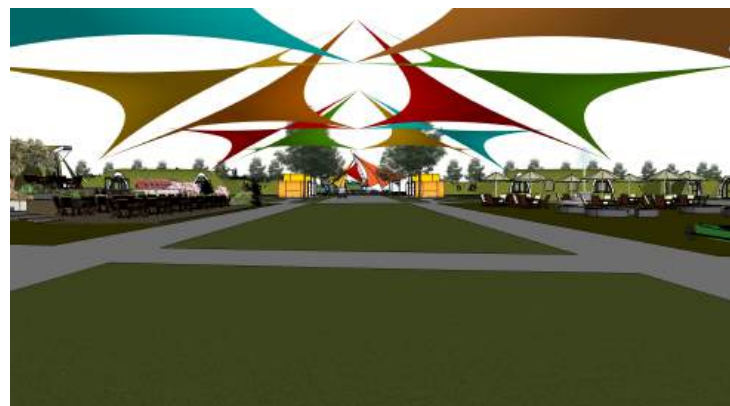




# RESORTS

## GMM LOTUS – JAPAN

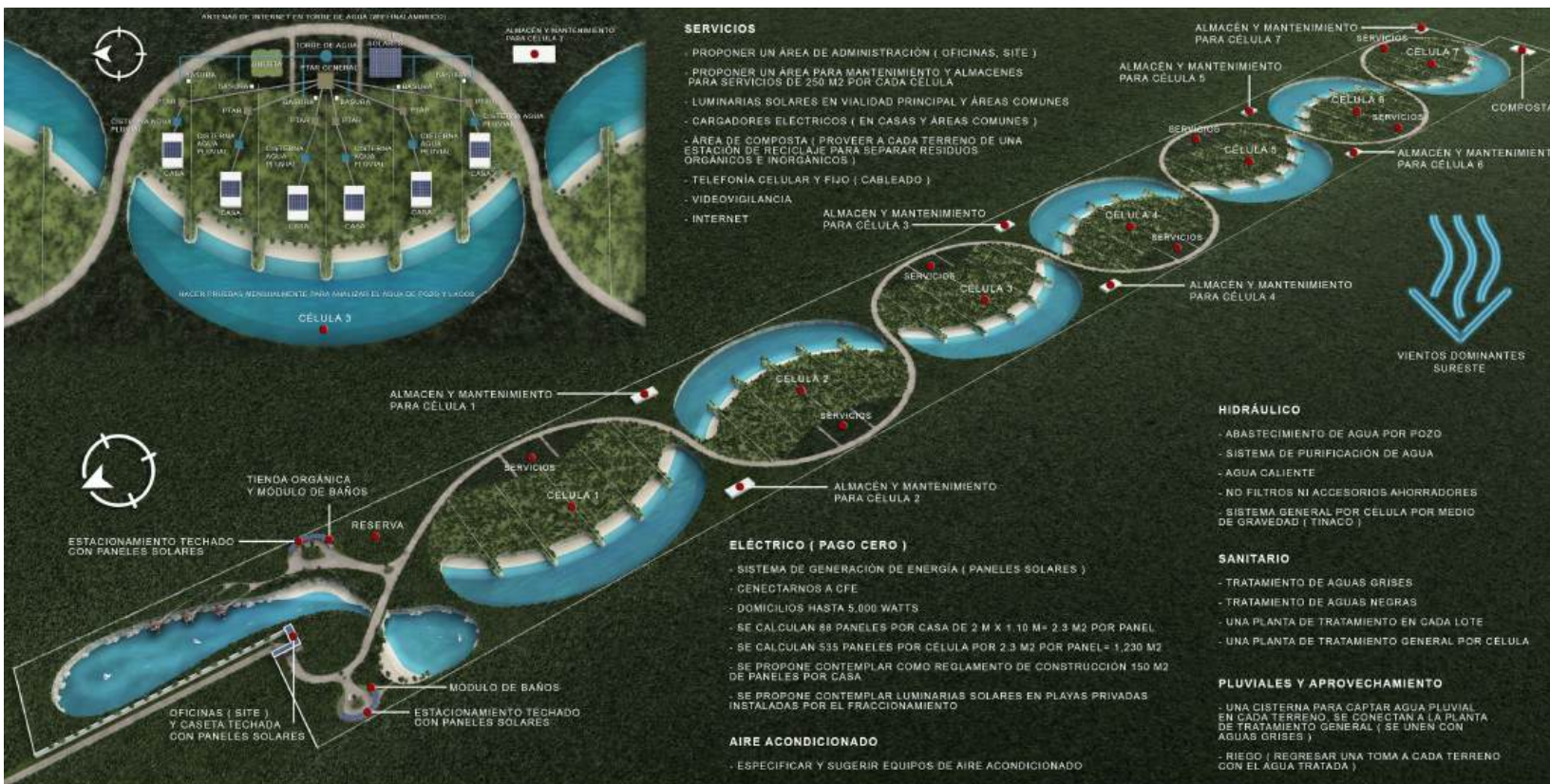
The urban design is inspired by the Lotus Flower, a symbol of both beauty and balance, serving as the core element that guides the flow of movement throughout the space. At the heart of the project lies a central sanctuary—a place that invites moments of self-reflection, fosters dialogue, and nurtures connection with others. Surrounding this tranquil nucleus, verdant green spaces radiate outward, creating a seamless bond between humanity and nature, where each step taken feels in harmony with the earth. On the periphery, spaces for recreation offer immersive experiences that invite joy and play, embodying the spirit of the Lotus Flower itself—a perfect equilibrium between inner reflection and the pleasures of the outer world. This design celebrates the twofold nature of human existence: the introspective journey toward inner peace, and the outward embrace of life’s vitality. Together, they form a holistic path that leads to the illumination of consciousness, where mind, body, and spirit unite in perfect harmony.





# 7 PLAYAS – CANCUN – MEXICO

A project inspired by the geometry of human DNA, resulting in an urban design of breathtaking beauty. It takes shape as a flowing, crystalline blue serpent of water, weaving through the landscape, creating serene cenotes and pristine white-sand beaches. These natural havens converge around residential plots, each gently immersed in nature, crafting a living experience that is nothing short of unique—magical, exotic, and enchanting at first glance. It is a vision unlike anything known before, an exceptional proposal that transcends conventional design and invites all who encounter it to fall in love with its extraordinary harmony.



PLAYAS  
CANCUN





## ULTIMO MAYA RESORT & SPA – TULUM

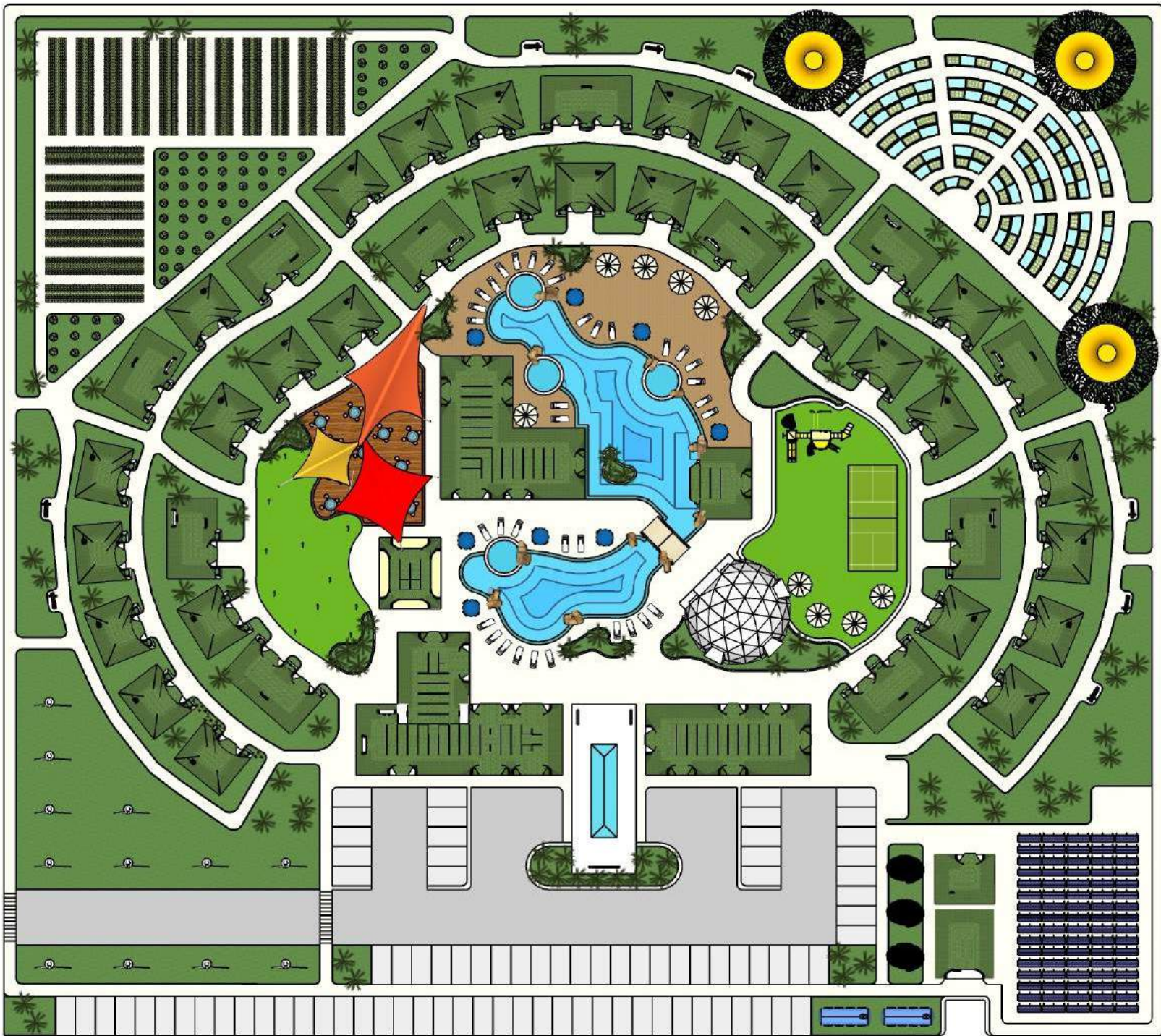
We have harnessed the exquisite beauty of our Globus Full models to create this stunning boutique hotel, elevated to the height of the treetops and palms. It offers a truly unique experience, one rarely seen, that draws inspiration from the ancient tradition of treehouse living, yet elevated to the elegance and comfort of a five-star retreat. An elevated pool winds gracefully through these spherical rooms, each one offering unobstructed views of the horizon. The result is a harmonious blend of nature and luxury, where every moment feels like a journey into tranquility. This immersive, almost otherworldly environment fosters a profound sense of inner peace and beauty, inviting guests to lose themselves in a space where the boundaries between earth, sky, and soul dissolve.





## W.S. ECO-VILLAGE, POWERED BY THE 4 ELEMENTS:

**Wonderful Structures** envisions a groundbreaking, world-changing eco-sustainable project in the heart of Quintana Roo, Mexico—an Eco-Village that will not only live in harmony with the land, but actively regenerate and enrich it. This visionary community will harness the power of nature's four elements—earth, wind, fire, and water—to create a self-sustaining haven. Advanced, cutting-edge technologies will allow the village to generate its own energy, harvest water, and cultivate food, transforming the concept of sustainable living into a vibrant, thriving reality. It is a blueprint for the future, where innovation and nature converge to nurture both the planet and its inhabitants in a balanced, holistic way.





# MANAK BOUTIQUE HOTEL – RUTA DE LOS CENOTES – CANCUN

Wonderful Structures is excited to present its current project under construction, owned by Blake Corporation. Located on the Route of the Cenotes, just minutes from the Maya Train Station.

This ambitious project will feature 18 luxury rooms of various sizes and architectural styles. These rooms are constructed using our patented technology, inspired by the ancient Maya civilization and incorporating their ancestral symbols to create an immersive experience in this remarkable culture.

Additionally, the project will include commercial spaces along the Route of the Cenotes, spanning 100 meters, which will become a major tourist attraction in the area.

The spectacular project is set to open to the public in the first half of 2025.





# KALANI CULTURAL CENTER – HAWAII

The Cultural and Research Project on the Island of Hawaii is a large-scale, multidisciplinary development comprising a total of 50 modular units. This project is designed to integrate diverse functional areas, including hospitality, cultural exchange, scientific research, and sustainable agriculture.

The overall goal of the project is to foster a symbiotic relationship between cultural preservation, scientific research, and environmental sustainability, contributing to the island’s socio-economic development while honoring its natural and cultural heritage.





## HOTELS & AIRBNB

---

### **XCALAK BOUTIQUE HOTEL, IN THE CARIBBEAN COAST OF MEXICO**

An exclusive haven for European investors, this distinguished hotel offers 16 meticulously crafted residential units, each designed with elegance and comfort in mind. Every detail has been thoughtfully curated to ensure seamless operation and an unparalleled guest experience. With 100 meters of pristine white-sand beach stretching out before you, the hotel lies nestled in the heart of the Caribbean, where turquoise waves gently kiss the shore.

This is more than just a luxury investment—it's an invitation to immerse oneself in the serene beauty of nature, to bask in the tranquility of sun-drenched days, and to revel in the exotic charm that only the Caribbean can offer. The perfect fusion of modern sophistication and tropical splendor, this property promises not just a lifestyle, but an experience: one of relaxation, rejuvenation, and the allure of a truly unique paradise.





## A PROJECT IN COSTA RICA WITH GERMAN INVESTMENT

A project of sublime simplicity and beauty, breaking free from the constraints of traditional orthogonal designs, this vision proposes a central ring that embraces an open-covered space around a firepit—an invitation to gather and share in the warmth of family. This ring-shaped home opens gracefully toward an infinite pool, its edges blending seamlessly with the horizon. Encircling it is a fine gravel path, leading to a workshop area and covered parking on one side, and on the other, a service and storage zone. It is a different kind of proposal—an ideal sanctuary for a tropical environment, where the cool breeze naturally circulates, refreshing the living spaces. The fluid curves of the architecture flow in harmony with the surrounding nature, creating a gentle, organic geometry that feels at one with the landscape, offering a tranquil refuge where every detail connects to the rhythm of the earth.



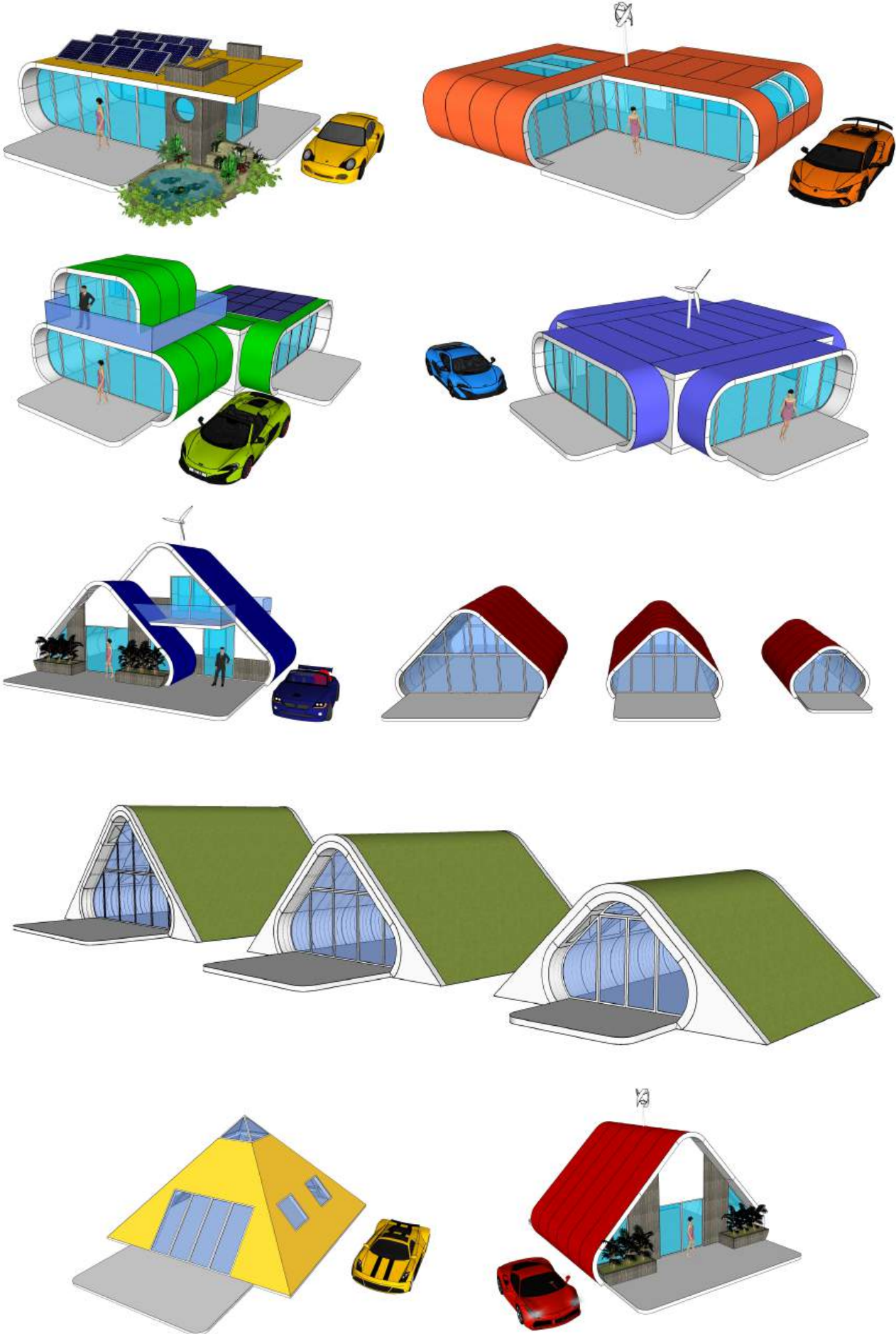


# GEM CABINS COLLECTION

At the intersection of innovation and artistry, we craft extraordinary and bespoke designs for hotel chains, harnessing the limitless versatility of our cutting-edge technologies. Each creation is a masterpiece, tailored to transform spaces into immersive experiences that captivate the senses.

Our designs go beyond the conventional, blending form and function to offer unique, memorable environments where luxury meets creativity. Through the power of our advanced technologies, we unlock a world of infinite possibilities and designs that adapt, evolve, and inspire.

Here, we present a collection of our work, showcasing the boundless creative potential that our innovations bring to life. These examples are not just projects—they are the vision of what happens when art and technology unite to redefine the future of hospitality.





# HOMES

---

## LUXURY CAPSULES

Wonderful Structures offers the potential to create a new era of luxury homes, crafted from cutting-edge fiber-reinforced polymers. These two-story residences, shaped like capsules, are architectural marvels that combine opulence and beauty in every detail. With their gently curved walls and expansive interiors, they evoke a sense of grandeur and openness, while generous terraces extend outward, cantilevered over the landscape, inviting residents to fully embrace the surrounding vistas.

The spaces within are pristine and bathed in natural light, exuding simplicity, elegance, and understated beauty. These homes speak the language of prestige, their sheer expansiveness and transparency creating an atmosphere of luxury, where the boundaries between the interior and exterior dissolve. The landscape outside becomes an integral part of the living experience, merging seamlessly with the refined, harmonious atmosphere of the home, offering a sanctuary that connects to nature and elevates everyday life.





## SAPPHIRE MODEL

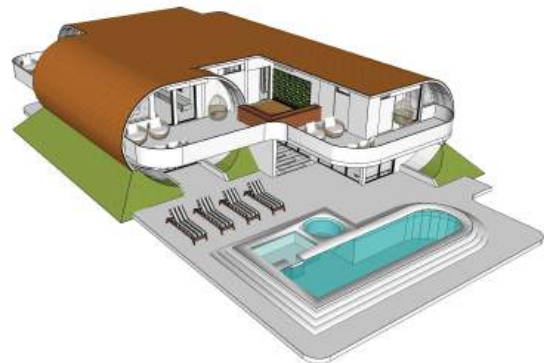
This model was conceived for a discerning client in Dubai, currently in the process of securing construction permits on the iconic Palm Jumeirah. It opens a new frontier in creative design, offering luxury mansion-style residences that redefine opulence. With panoramic views and balconies in every direction, each home unfolds into generously proportioned spaces, where interior voids create dramatic double-height areas, ideal for grand social zones that exude elegance and vastness. These soaring spaces are a canvas for refined living, where light, air, and design converge to create an atmosphere of sophistication, inviting both introspection and celebration in equal measure. Every corner of this residence is a testament to the art of luxury, capturing the essence of modern grandeur while offering a seamless connection to the spectacular surroundings.





## W.S. CAPSULE MODELS

Two-story homes, designed like capsules, emerge as sculptural works of art, their beauty unfolding in the elegance of their unusual form. The curves that define this architecture create a sense of ergonomic harmony, making the spaces feel more inviting and warm, encouraging one to immerse fully in the experience of living. On the exterior, their beauty is undeniable, with organic shapes that eschew corners and sharp edges, softening the rigid lines that often dominate concrete cities. These homes offer a gentle, flowing presence, a sanctuary that contrasts with the harsh geometry of urban landscapes, bringing a sense of peace and fluidity to the environment.



## TEMPLE & CHURCH

---

### TEMPLE – USA

The remarkable versatility of our technology allows us to create intricate and breathtaking designs, such as this temple for a religious client in the United States. Their vision is to craft a space that feels distinct, one that harmonizes with nature while elevating the spirit towards transcendence and reverence for the divine. This sacred space not only nurtures an atmosphere of devotion but also fosters a connection to the outdoors through open courtyards, allowing the interior spaces to breathe and be bathed in natural light. In every detail, the design aspires to create a sanctuary that nourishes both the soul and the senses, blending the sacred with the serenity of nature.





## THE ECO-GREEN CHURCH

This is another design proposal for a client in South Africa, who envisions a space of prayer for his Christian community of over 300 people. His aspiration is to gather the faithful beneath the influence of nature, in a sanctuary of silence and peace where the inner being can find harmony with the natural surroundings. Surrounded by gardens, trees, and blossoms, this sacred space becomes a living tribute of gratitude—an offering of praise for the gift of life, for the planet that sustains us with its boundless generosity, and for the sacred duty to care for it with love and reverence. Every corner of this design is infused with a quiet reverence for the earth, creating a place where spirit and nature unite in sacred communion.

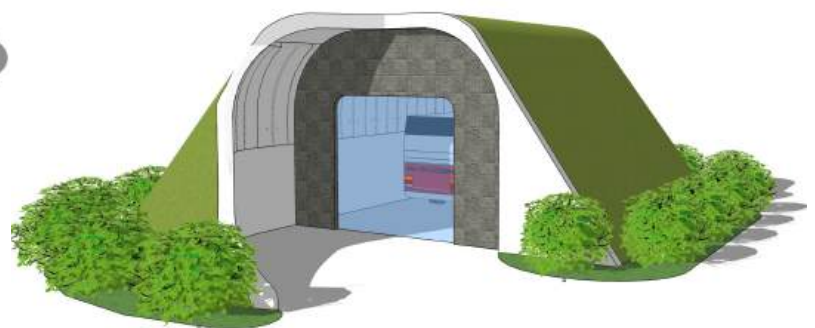
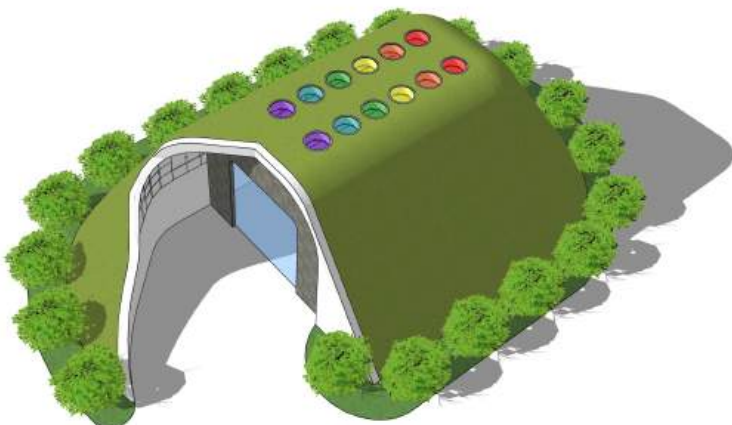
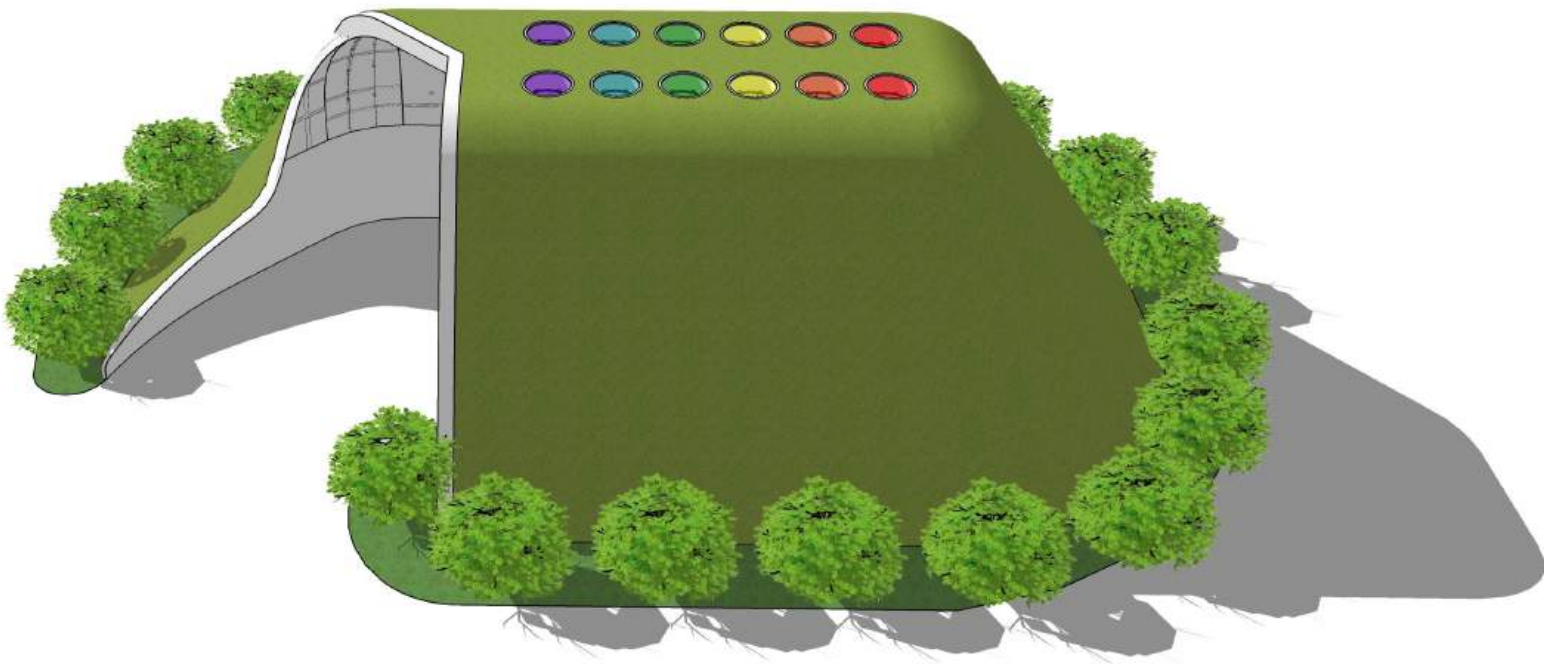
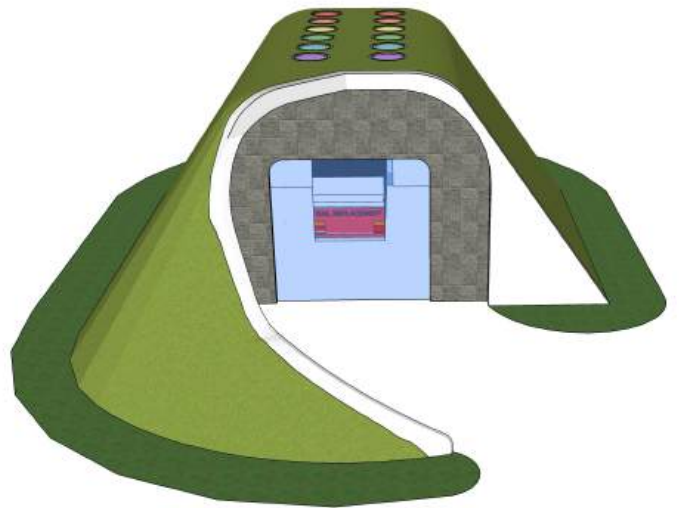
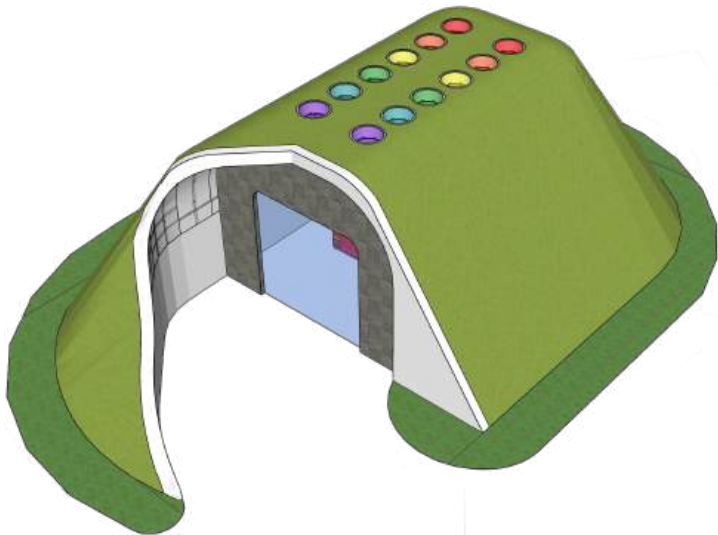




## BUS STATION - DUBAI

---

An advanced proposal tailored to meet the client's needs, crafted as a sculptural composition that not only serves a specific function but also transforms into a decorative architectural element. This creation seamlessly integrates with the natural surroundings, enhancing and enriching the environment. It becomes more than just a structure—it evolves into a captivating attraction, inviting both admiration and memory, a place that beckons to be visited and remembered. Through its form and purpose, it offers a dialogue between design and nature, elevating the space it occupies while fulfilling its intended role.

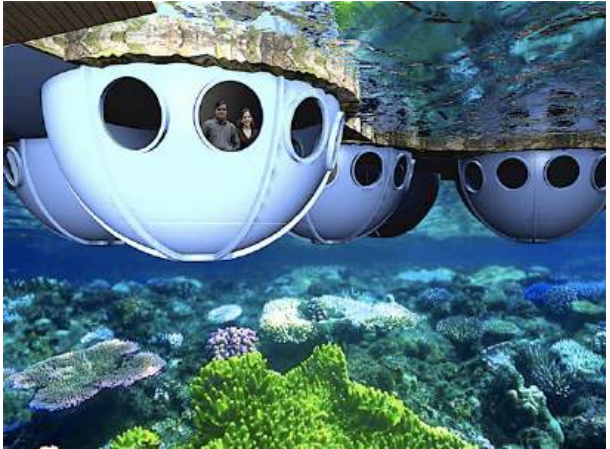
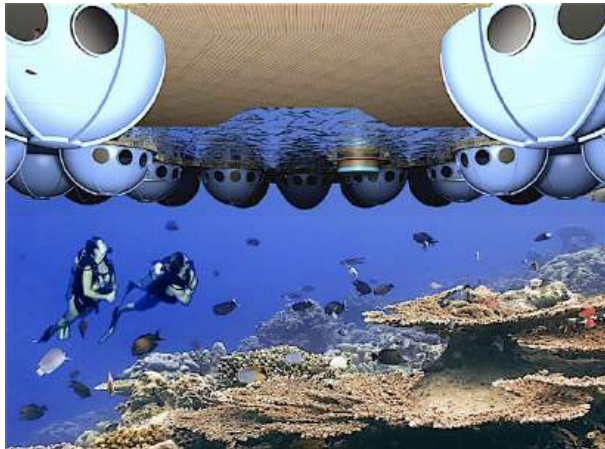




# SPECIAL PROJECTS

## FLOATING HOTEL

This is a visionary proposal for a client seeking to develop a floating hotel, a mobile island that can glide across coastal waters, offering guests an unparalleled immersion into the marine world. It is a design that breaks free from the conventional, daring to offer rooms with mesmerizing underwater views, where the boundaries between the guest and the ocean blur in seamless harmony. Within, an interior pool beckons, while a bar glides gently across its waters, serving exotic cocktails to those who seek to indulge in the surreal. The floating oasis also boasts a helipad, a sun-drenched terrace for entertainment, and lush vegetation, with trees that sway on the surface, creating a canopy of green. An ecological pathway winds around this astounding floating ring, inviting visitors to explore and immerse themselves in the wonders of the sea, where each moment feels like a journey into a dream. The entire concept offers an invitation to not just stay, but to *\*live\** in an environment that celebrates the beauty and mystery of the deep blue.





## OIIOO - ZERO INFINITY – SPACE CENTER

We conclude this brief journey through our technology and its vast possibilities with this futuristic project, designed for the company OIIOO, which aims to take tourists into space aboard aerostatic balloons. In this extraordinary voyage, passengers will experience the phenomenon of zero gravity.

The architectural proposal is a breathtaking composition of spheres crafted from advanced polymers and aerospace materials, housing the control spaces and technical staff amidst lush indoor gardens. These spheres are encircled by a three-story ring that will house a space museum, restaurants, and commercial spaces. The entire structure blends the cutting-edge of technology with the serenity of nature, creating a unique environment where visitors can prepare for their journey to the stars while being enveloped in an atmosphere of discovery, wonder, and exploration. It is a space not just for travel, but for transcending the boundaries of our earthly existence, an architectural marvel designed to carry the human spirit into the unknown.

