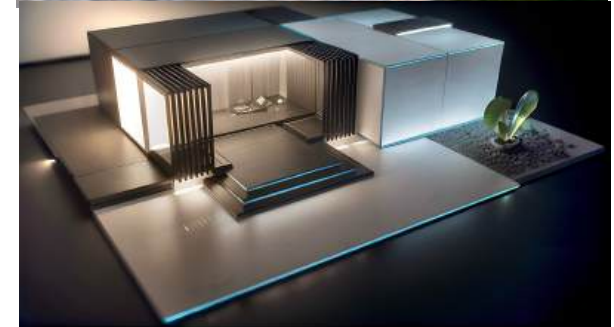


WSW

Wonderful Structures

WE MAKE DREAMS COME TRUE

www.WonderfulStructures.com





Self-sustaining homes, designed to operate completely off the grid, independent of traditional urban utilities. They use natural resources to fulfill essential needs. Our Bio-Homes can be assembled in just 5 days, followed by an additional 6 weeks for waterproofing, technical installations, interior partitions, soil covering, furniture, and decoration. Made from Fiber Reinforced Polymers and locally sourced materials, they minimize reliance on external inputs, resulting in significant cost savings.



2BD BIO-HOME - SMALL

2 Bedroom - 1 Bath

Total Interior Area: 1,028 Sqft - 95.45 m²



Price: **\$63,000**





TOTAL INTERIOR AREA: 1,028 Sqft - 95.45 m2

Bedrooms : 145.75 sqft - 13.54m2 each
 Bathroom : 87.08 sqft - 8.09 m2
 Kitchen : 65.77 sqft - 6.11 m2

Social Area : 356.61 sqft - 33.13 m2
 Utility room : 33.15 sqft - 3.08 m2
 Indoor Farming : 130.89 sqft - 12.16 m2



This self-sustainable home is designed to offer you the ultimate in comfort and autonomy, ensuring that you have everything you need for a fulfilling lifestyle.

With its spacious and inviting areas, each designed by expert architects specializing in sustainability, this residence creates a harmonious living environment that feels both cozy and expansive.



2BD Bio-Home - Small
1,028 Sqft - 95.45 m²



2BD BIO-HOME - MEDIUM

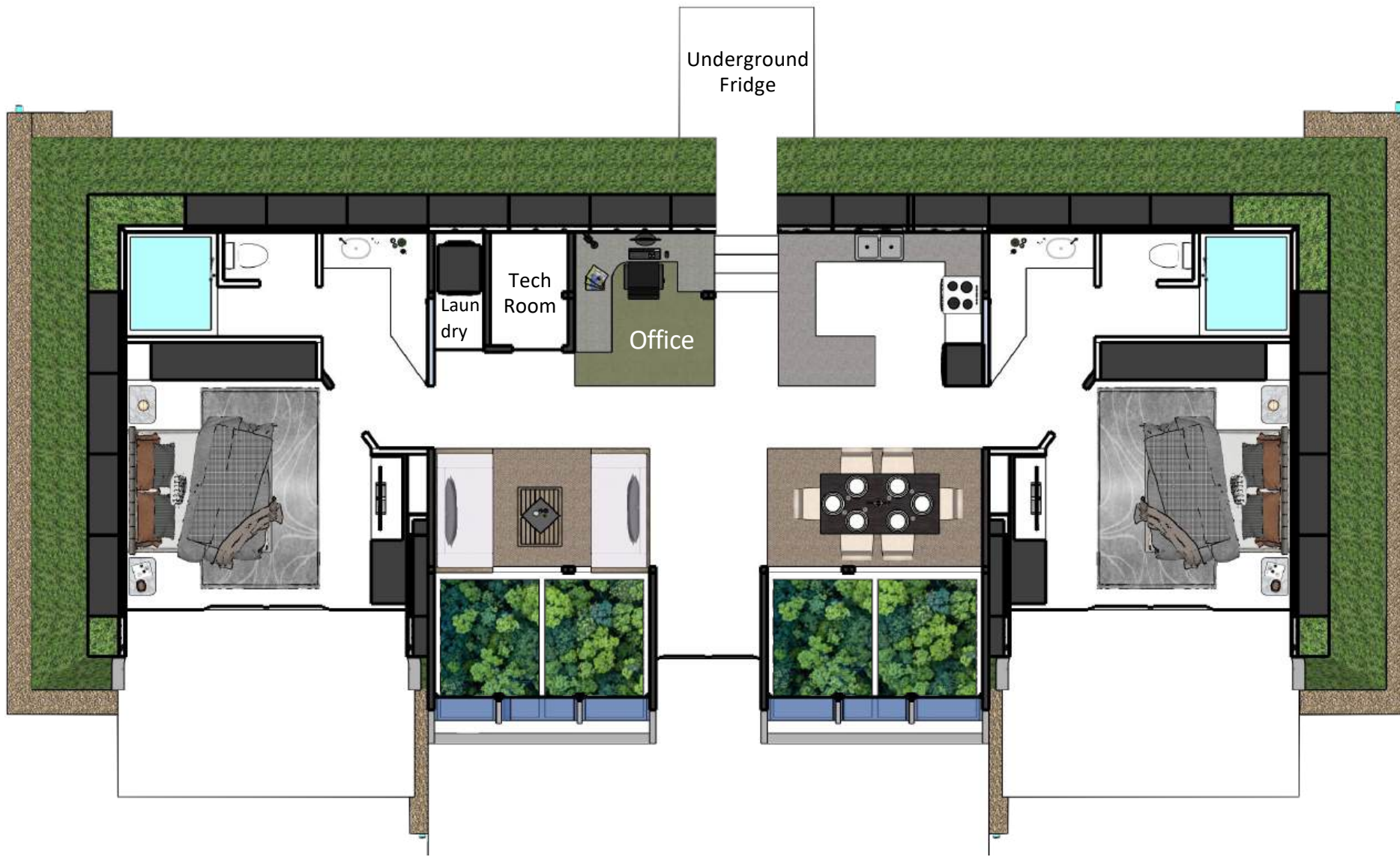
2 Bedroom - 2 Bath

Total Interior Area: 1,502 Sqft - 139.53 m2



Price: **\$79,000**





TOTAL INTERIOR AREA: 1,502 Sqft - 139.53 m2

Bedrooms : 192.56 sqft - 17.89m2 each
 Bathroom : 102.90 sqft - 9.56 m2 each
 Kitchen : 59.20 sqft - 5.50 m2

Social Area : 423.45 sqft - 39.34 m2
 Utility room : 33.15 sqft - 3.08 m2
 Indoor Farming : 190.73 sqft - 17.72 m2

This carefully designed two-bedroom model offers generously spacious and well-lit environments. The bedrooms feature large facades that allow you to enjoy the views of the surrounding landscape.

The bathroom is designed to accommodate three people simultaneously in separate spaces, while the social area seamlessly integrates all living spaces into a warm and inviting atmosphere perfect for families.



2BD Bio-Home - **Medium**
1,502 Sqft - 139.53 m2



4BD BIO-HOME - LARGE

4 Bedroom - 2 Bath

Total Interior Area: 1,769 Sqft - 164.34 m2



Price: **\$89,000**





TOTAL INTERIOR AREA: 1,769 Sqft - 164.34 m2

Bedrooms : 196.22 sqft - 18.23m2 each
 Bathroom : 104.30 sqft - 9.69 m2 each
 Kitchen : 59.20 sqft - 5.50 m2

Social Area : 428.40 sqft - 39.80 m2
 Utility room : 33.15 sqft - 3.08 m2
 Indoor Farming : 190.73 sqft - 17.72 m2



This four-bedroom model offers comfortable, spacious, and well-lit environments, designed to provide everything you need for living in remote locations.

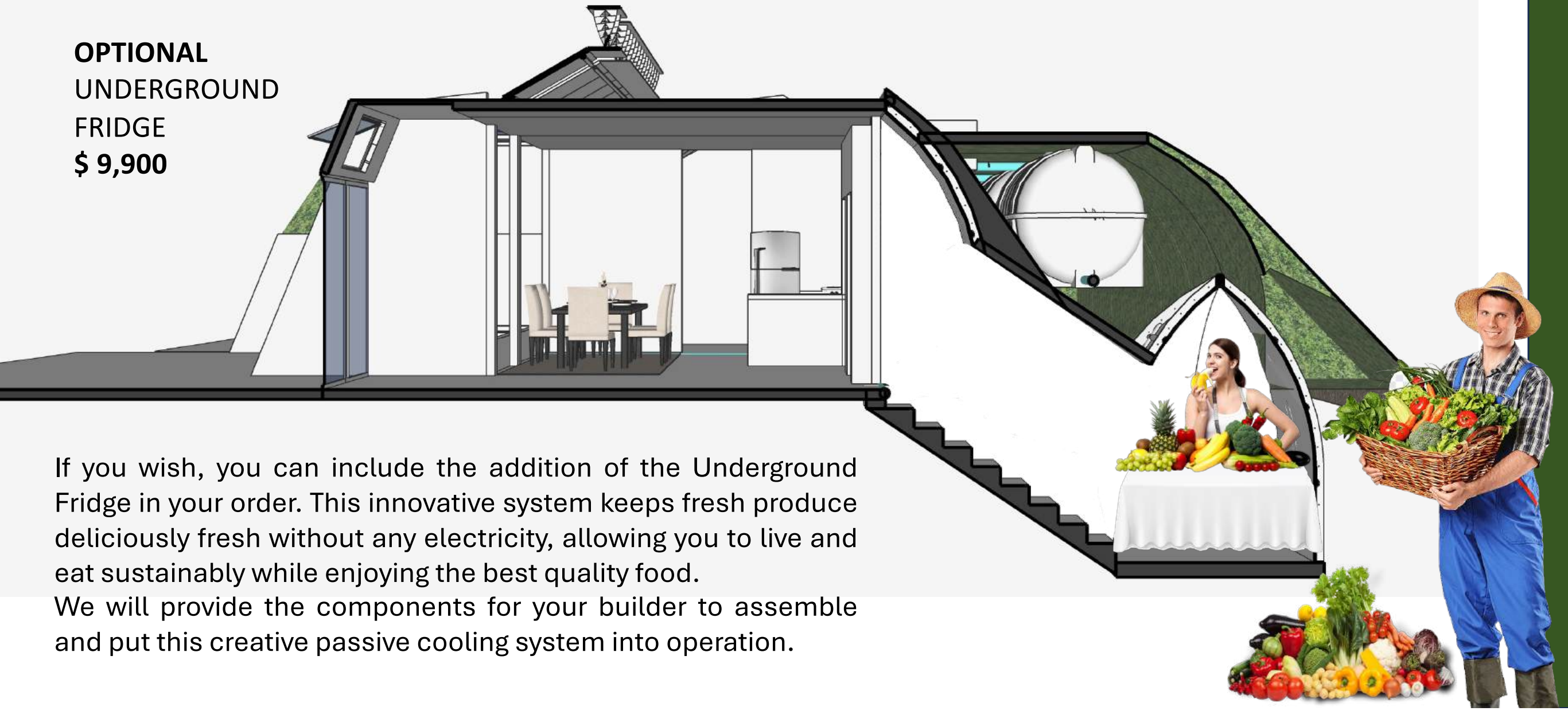
It incorporates systems for capturing your own water and energy, geothermal ventilation, vegetable cultivation, biogas production, and much more.



4BD Bio-Home - Large
1,769 Sqft - 164.34 m²



**OPTIONAL
UNDERGROUND
FRIDGE
\$ 9,900**



If you wish, you can include the addition of the Underground Fridge in your order. This innovative system keeps fresh produce deliciously fresh without any electricity, allowing you to live and eat sustainably while enjoying the best quality food.

We will provide the components for your builder to assemble and put this creative passive cooling system into operation.

ECO-GREEN COLLECTION

HOSPITALITY AND RESIDENTIAL MODELS



SUITE - SINGLE

1 Bedroom - 1 Bath

Area: 33.40 m2 / 359.51 SqFt

[VIEW FLOOR PLANS](#)

Price: \$23,966





SUITE - DOUBLE

2 Bedroom - 2 Bath

Area: 81.50 m2 / 877.26 SqFt

[VIEW FLOOR PLANS](#)

Price: \$49,430







DELUXE CABIN

1 Bedroom - 1 Bath

Area: 45.27 m² / 487.28 SqFt

[VIEW FLOOR PLANS](#)

Price: \$30,420







ROYAL CABIN

1 Bedroom - 1 Bath

Area: 33.27 m² / 358.11 SqFt

[VIEW FLOOR PLANS](#)

Price: \$23,347







RHODES - Terrace

2 Bedroom - 2 Bathroom

Area: 65.20 m2 / 701.80 SqFt

[VIEW FLOOR PLANS](#)

Price: \$33,390





MIKONOS - Terrace

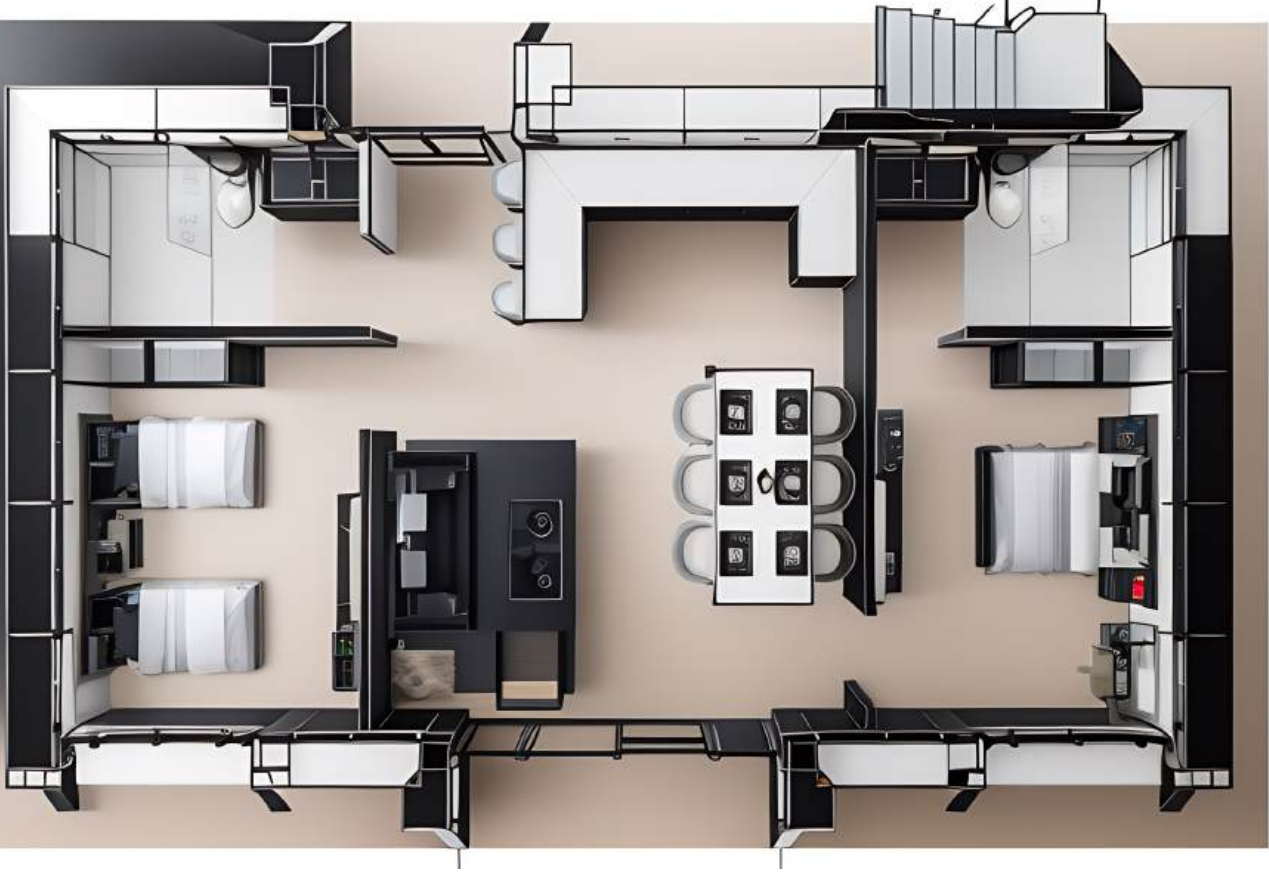
2 Bedroom - 2 Bathroom

Area: 66.50 m2 / 715.80 SqFt

[VIEW FLOOR PLANS](#)

Price: \$29,858





KARPATOS - Terrace

2 Bedroom - 2 Bathroom

Area: 69.00 m2 / 742.70 SqFt

Price: \$33,891

[VIEW FLOOR PLANS](#)





VENEZIA - Terrace

3 Bedroom - 2 Bathroom

Area: 81.45 m²/ 876.72 ft²

[VIEW FLOOR PLANS](#)

Price: \$37,754





PALMARIA - Terrace

3 Bedroom - 2 Bathroom

Area: 82.00 m² / 882.64 ft²

[VIEW FLOOR PLANS](#)

Price: \$39,678





TUSCANY 3BD with TERRACE

3 Bedroom - 2 Bath

Area: 113.34 m2 / 1,220 SqFt

Price: \$51,018

[VIEW FLOOR PLANS](#)





TERRANOVA - 1 BEDROOM

1 Bedroom - 1.5 Bath

Area: 102.86 m2 / 1,107 SqFt

Price: \$56,830

[VIEW FLOOR PLANS](#)







TERRANOVA - 2 BEDROOM + GARAGE

2 Bedroom - 2.5 Bath

Area: 178.15 m2 / 1,917 SqFt

[VIEW FLOOR PLANS](#)

Price:

Without garage: \$73,403

With garage: \$92,444









TERRANOVA - 3 BEDROOM + GARAGE

3 Bedroom - 3.5 Bath

Area: 193.41 m2 / 2,081 SqFt

[VIEW FLOOR PLANS](#)

Price:

Without garage: \$ 83,547

With garage: \$ 99,999







ROYALE - 3 BEDROOM

3 Bedroom - 2 Bath

Area: 163.95 M² / 1,764.74 Ft²

Price: \$90,601

[VIEW FLOOR PLANS](#)







SANTORINI - 4 BEDROOM

4 Bedroom – 3.5 Bath

Area: 307.49 M² / 3,309.79 Ft²

Price: \$165,847

[VIEW FLOOR PLANS](#)







MURANO - 4 BEDROOM

4 Bedroom – 3.5 Bath

Area: 280.04 M² / 3,014.3 Ft²

Price: \$151,230

[VIEW FLOOR PLANS](#)







MODULAR RENTAL SYSTEM

Stage A: 4 units + Social..... : Economic \$ **96,393**
Area: 173.01 m2 / 1,862.3 SqFt Full..... \$ 110,397

Stage B: 7 units + Social..... : Economic \$ **140,031**
Area: 256.01 m2 / 2,755.7 SqFt Full..... \$ 160,198

Stage C: 10 units + Social..... : Economic \$ **183,669**
Area: 339.01 m2 / 3,649.1 SqFt Full..... \$ 209,999

[VIEW PDF PRESENTATION](#)



Stage A



Stage B



Stage C





Chic Fantasy

COLLECTION



CAPSULA

Area: 30 M² / 322.91 SqFt

Price: \$33,500

Includes:

FRP Shell Components, Exterior covers, fasteners and anchor bolts.

Not Included:

Slab, windows, doors, water sealants, furniture and accessories.





GLOBUS HALF

Interior Area: 38.69 M² / 416.45 SqFt

Interior + Deck Area: 47.72 M² / 513.65 SqFt

Price: 33,900

Includes:

FRP shell components, exterior covers, fasteners and anchor bolts.

Not Included:

Slab, windows, doors, water sealants, furniture and accessories.





GLOBUS FULL

Interior Area: 38.69 M² / 416.45 SqFt

Interior + Deck Area: 49.64 M² / 534.32 SqFt

Price: \$74,900

Includes:

FRP shell components, exterior covers, metal structure, fasteners and anchor bolts.

Not Included:

Slab, windows, doors, water sealants, furniture and accessories.





ARCUS

Interior Area: 35.47 M² / 381.79 SqFt

Interior + Deck Area: 58.58 M² / 630.55 SqFt

Price: \$37,900

Includes:

FRP shell components, exterior covers, fasteners and anchor bolts.

Not Included:

Slab, windows, doors, water sealants, furniture and accessories.



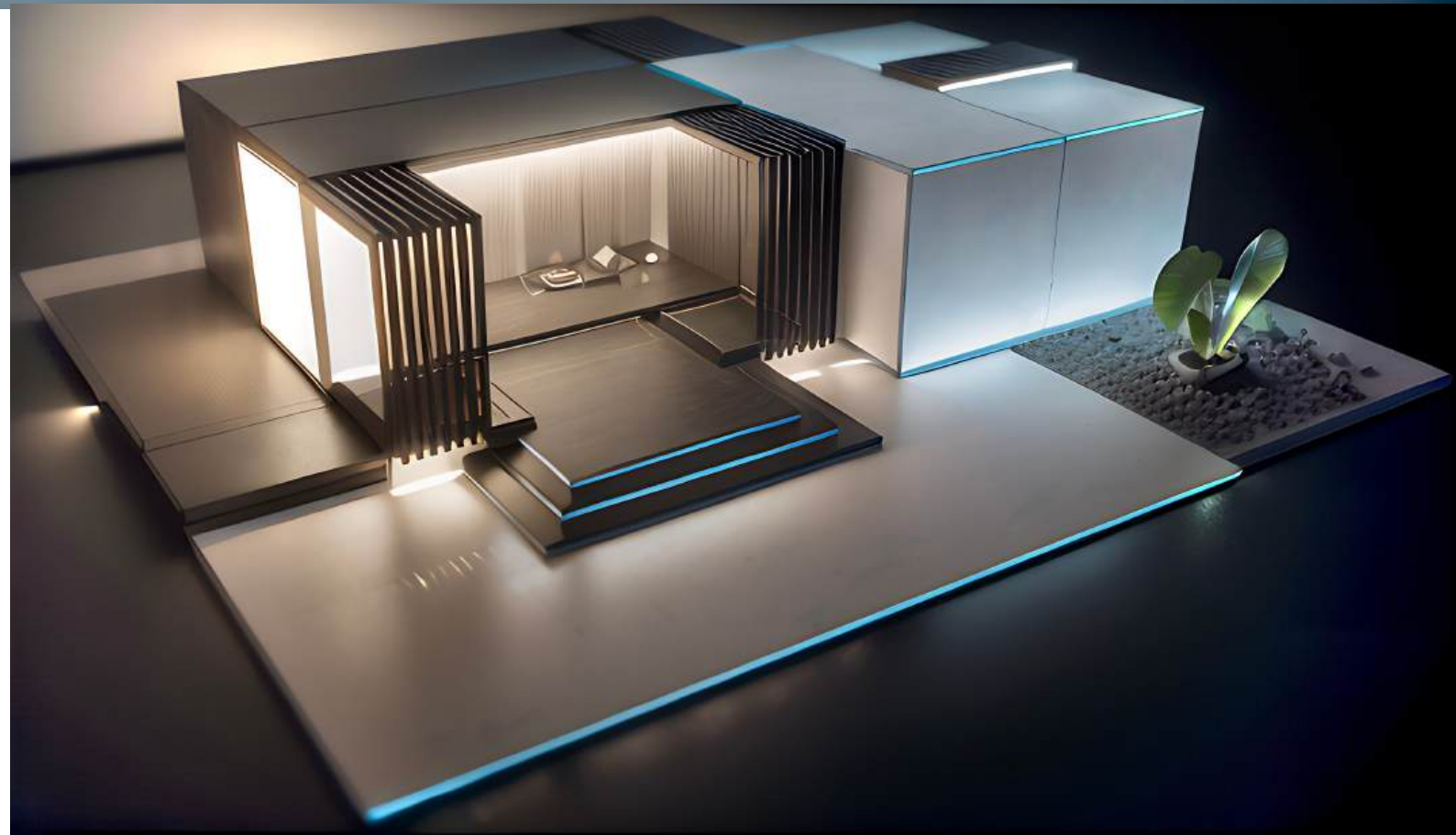


KUUBIC

Housing Module Ready to be Inhabited

Kuubic is a portable modular technology crafted from a steel cubic frame. Its structural ceilings and walls detach in any direction, enabling the creation of an infinite array of creative and aesthetically pleasing designs.

www.Kuubic.com



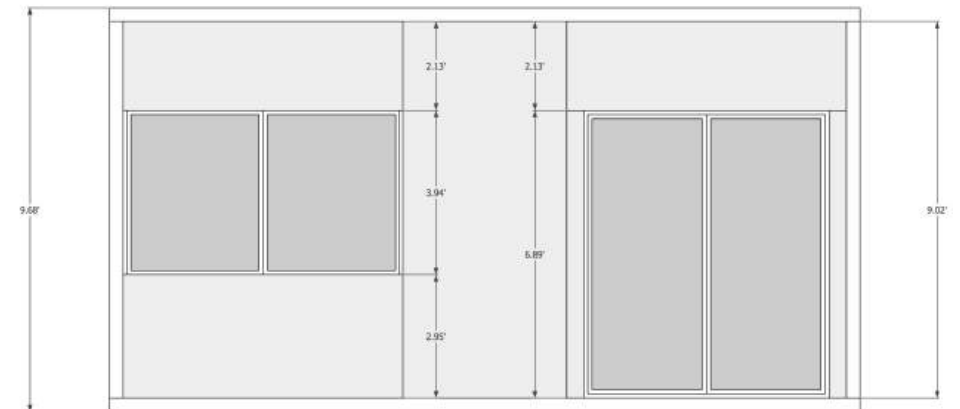
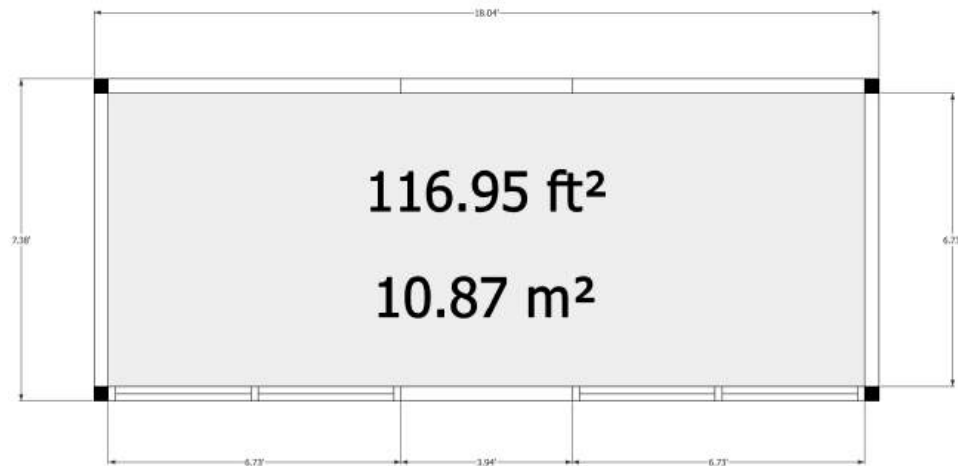
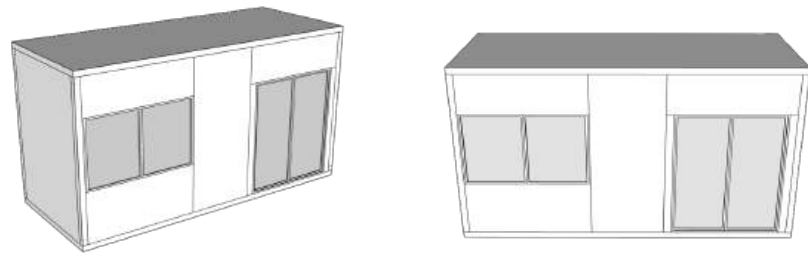
BLOSSOM

Area: 116.95 ft² / 10.87 m²

Without Floor: **\$15,412**

With Floor: **\$19,225**

8 Units per 40ft Container





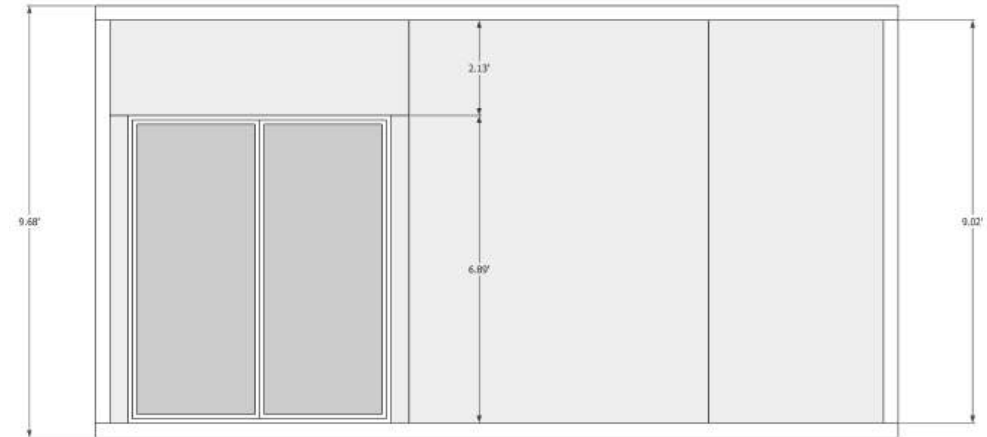
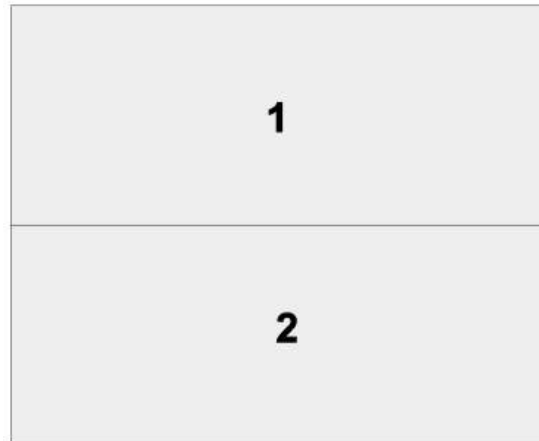
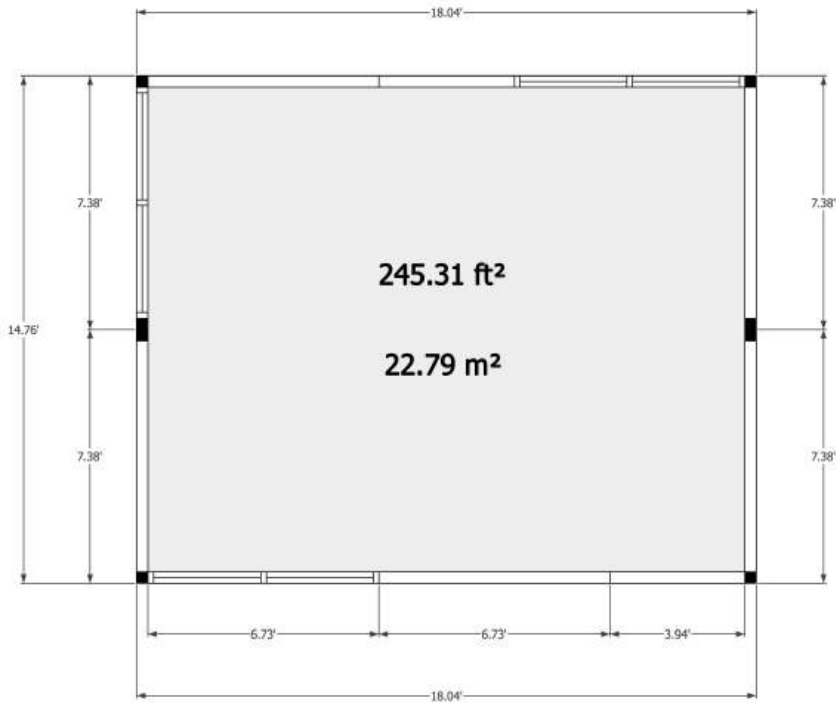
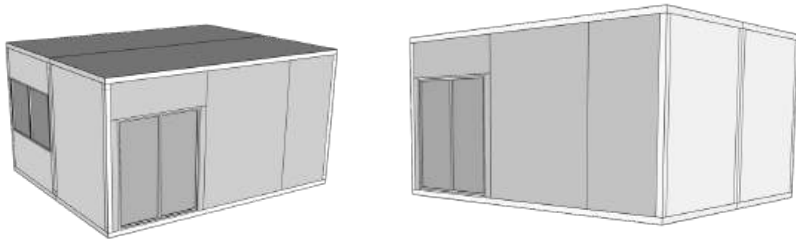
CEDAR

Area: 245.31 ft² / 22.79 m²

Without Floor: \$22,915

With Floor: \$30,541

6 Units per 40ft Container





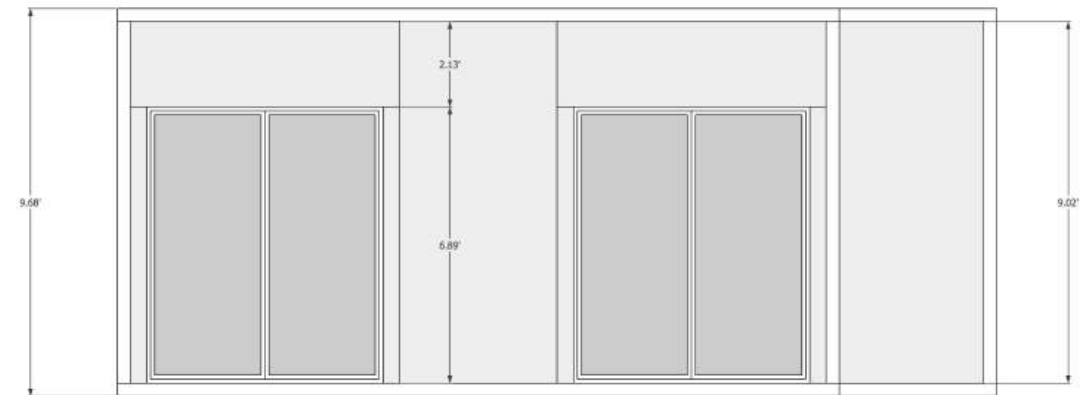
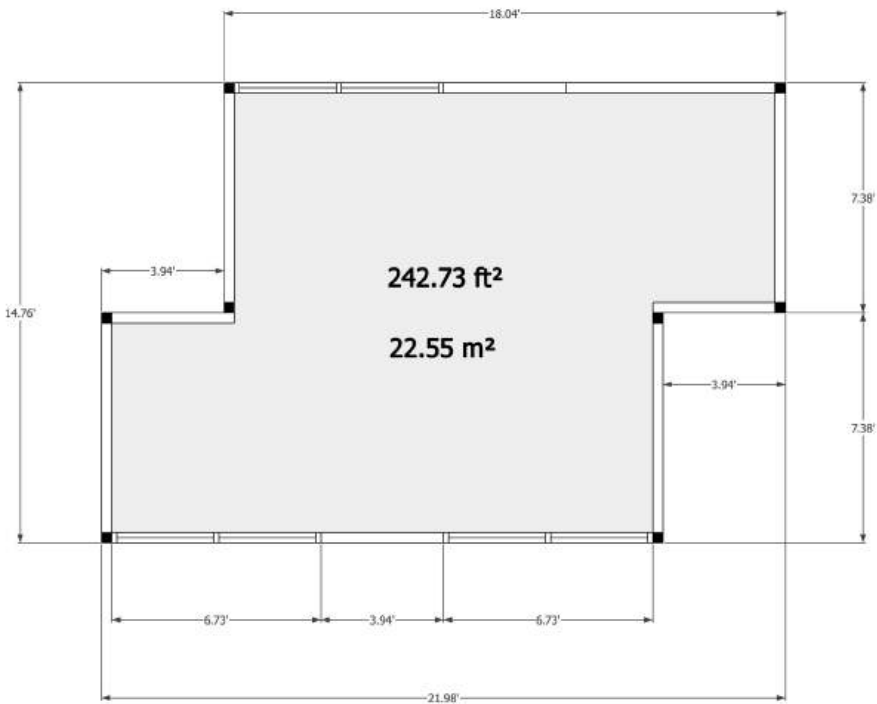
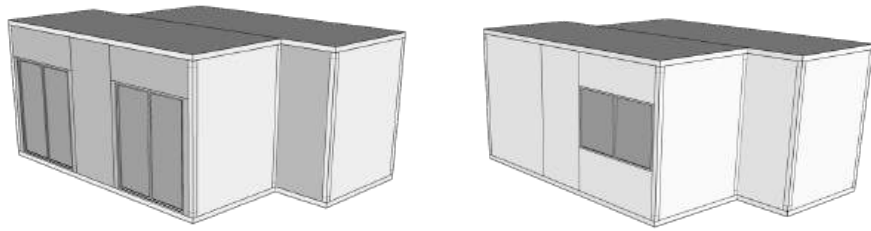
ASPEN

Area: 242.73 ft² / 22.55 m²

Without Floor: \$24,872

With Floor: \$32,498

6 Units per 40ft Container





CHERRY

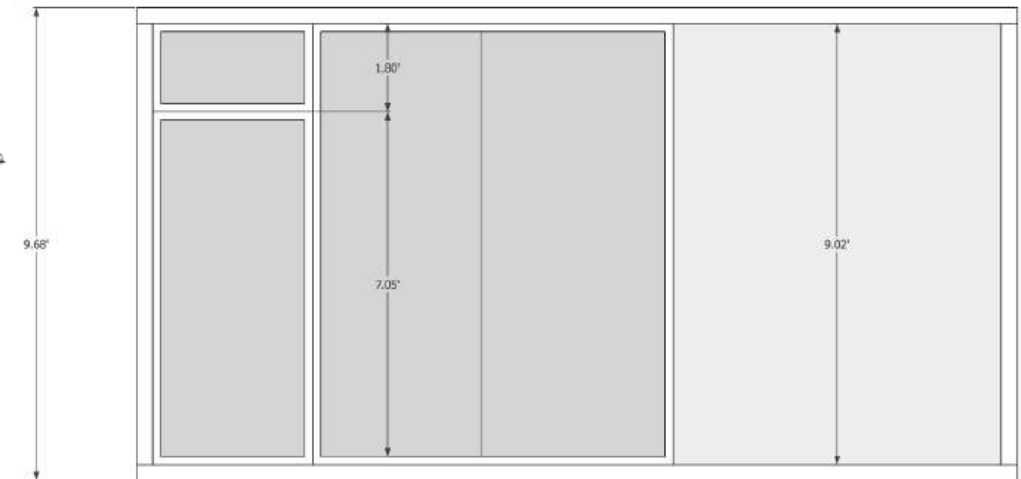
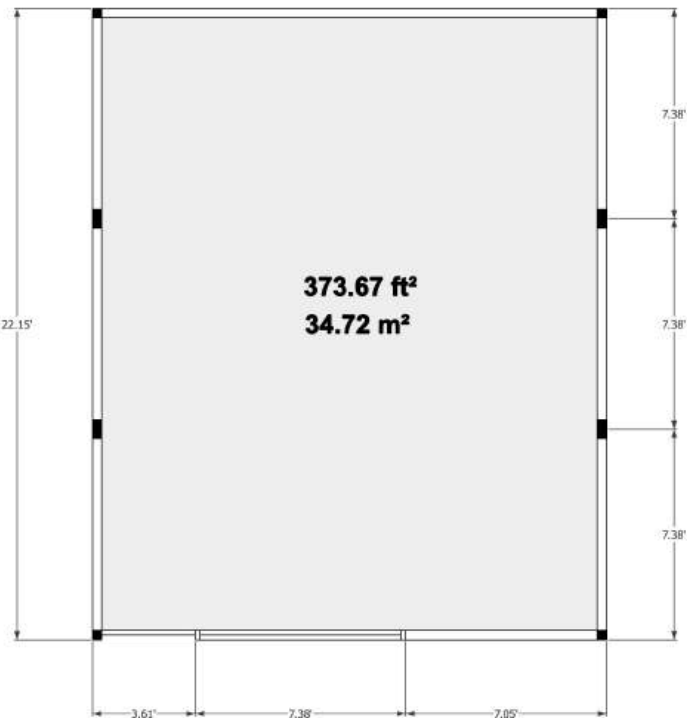
Area: 373.67 ft² / 34.72 m²

Without Floor: **\$30,566**

With Floor: **\$42,005**

4 Units per 40ft Container

1
2
3





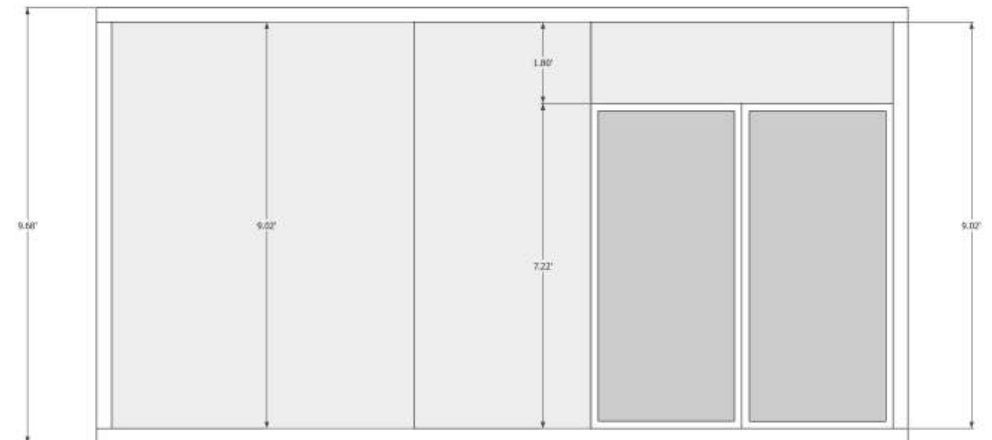
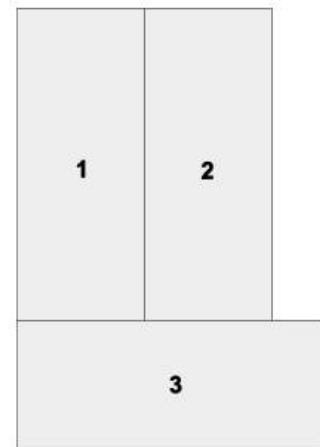
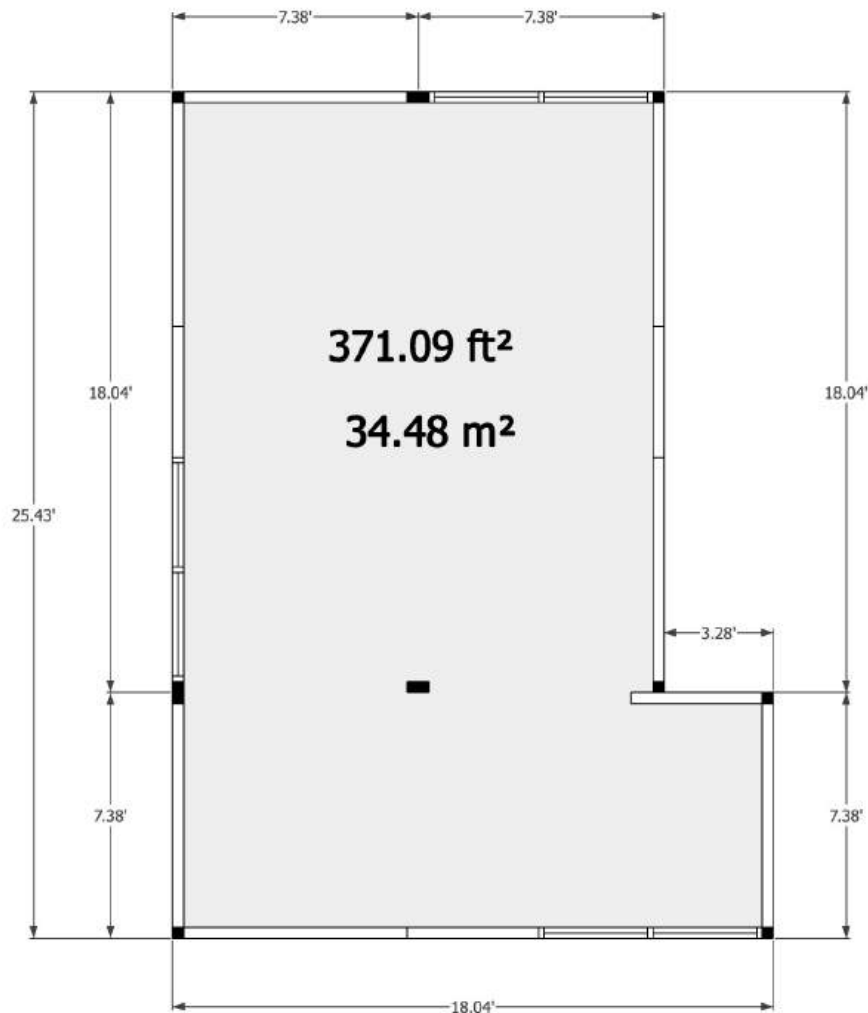
MAPLE

Area: 371.09 ft² / 34.48 m²

Without Floor: **\$32,207**

With Floor: **\$43,646**

4 Units per 40ft Container





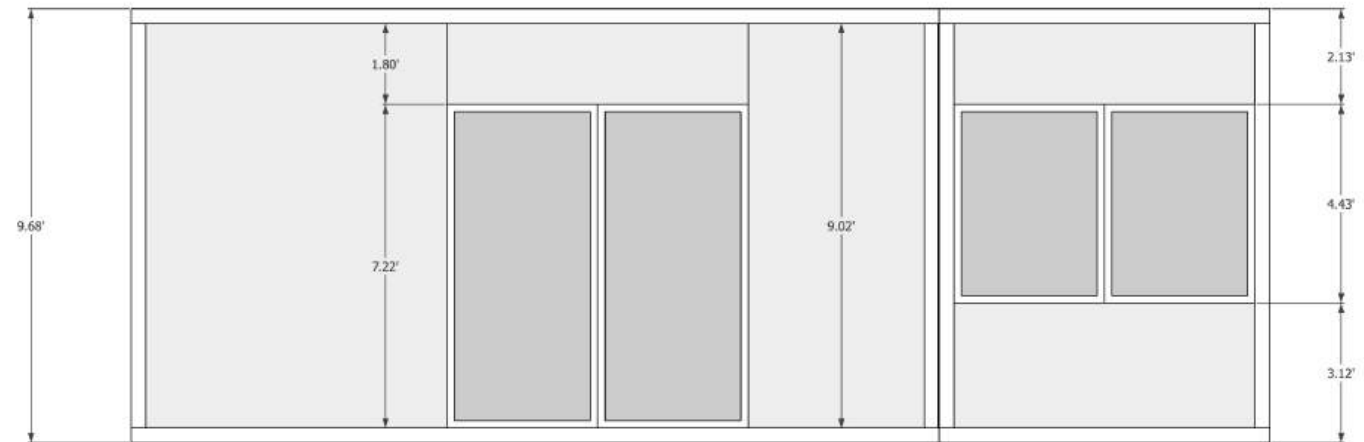
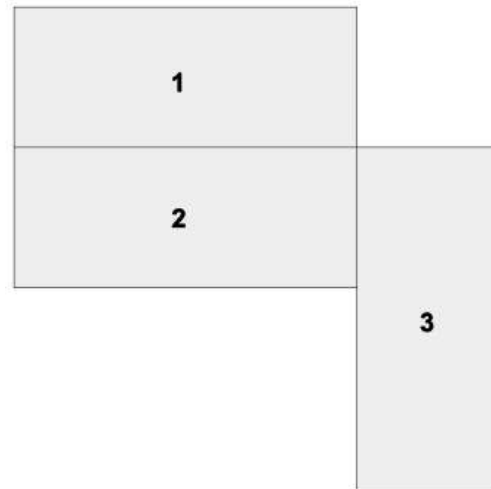
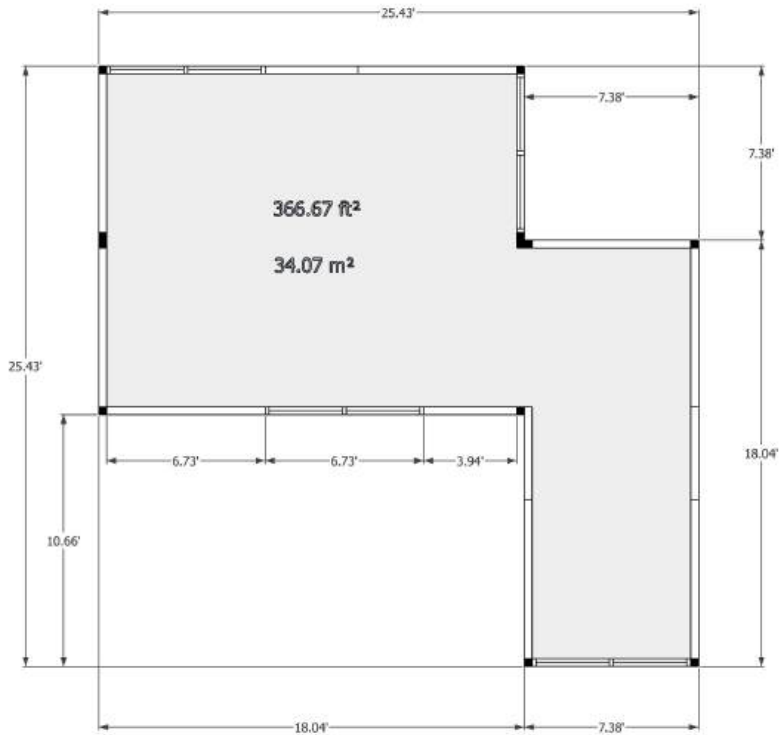
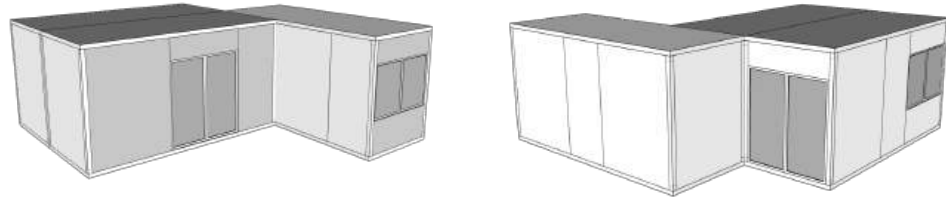
OAK

Area: 366.67 ft² / 34.07 m²

Without Floor: **\$33,873**

With Floor: **\$45,312**

4 Units per 40ft Container





MODEL	AREA		PRICE
	M2	SqFt	
2BD Oasis Bio-Home - Small	95.45 m ²	1,028 ft ²	\$ 63,000
2BD Oasis Bio-Home - Medium	139.53 m ²	1,502 ft ²	\$ 79,000
4BD Oasis Bio-Home - Large	164.34 m ²	1,769 ft ²	\$ 89,000
Royal Cabin	33.27 m ²	358.11 ft ²	\$ 23,347
Suite Single	33.40 m ²	359.51 ft ²	\$ 23,966
Deluxe Cabin	45.27 m ²	487.28 ft ²	\$ 30,420
Suite Double	81.50 m ²	877.26 ft ²	\$ 49,430
Rhodes - Terrace	65.20 m ²	701.80 ft ²	\$ 33,390
Mikonos - Terrace	66.50 m ²	715.80 ft ²	\$ 29,858
Karpatos - Terrace	69.00 m ²	742,70 ft ²	\$ 33,891
Venezia - Terrace	81.45 m ²	876,72 ft ²	\$ 37,754
Palmaria - Terrace	82.00 m ²	882.64 ft ²	\$ 39,678
Tuscany - Terrace	113.34 m ²	1,220 ft ²	\$ 51,018
Terranova 1 BD - 1.5 Bath	102.86 m ²	1,107 ft ²	\$ 56,830
Terranova 2 BD - 2.5 Bath	178.15 m ²	1,917 ft ²	\$ 73,403
Terranova 2 BD - 2.5 Bath + Garage	148.00m ²	1,593 ft ²	\$ 92,444
Terranova 3 BD - 3.5 Bath	193.41 m ²	2,081 ft ²	\$ 83,547
Terranova 3 BD - 3.5 Bath + Garage	163.00 m ²	1,754 ft ²	\$ 99,999
Royale 3 BD - 2 Bath	163.95 m ²	1,764 ft ²	\$ 90,601
Murano 4 BD - 3.5 Bath	280.04 m ²	3,014 ft ²	\$ 151,230
Santorini 4 BD - 3.5 Bath	307.49 m ²	3,309 ft ²	\$ 165,847
Modular Rental Economic - Stage A (4 Units + Social)	173.01 m ²	1,862 ft ²	\$ 96,393
Modular Rental Full - Stage A (4 Units + Social)	173.01 m ²	1,862 ft ²	\$ 110,397
Modular Rental Economic - Stage B (7 Units + Social)	256.01 m ²	2,755 ft ²	\$ 140,031
Modular Rental Full - Stage B (7 Units + Social)	256.01 m ²	2,755 ft ²	\$ 160,198
Modular Rental Economic - Stage C (10 Units + Social)	339.01 m ²	3,649 ft ²	\$ 183,669
Modular Rental Full - Stage C (10 Units + Social)	339.01 m ²	3,649 ft ²	\$ 209,999
Capsula	30.00 m ²	322.91 ft ²	\$ 33,500
Arcus	35.47 m ²	381.79 ft ²	\$ 37,900
Globus Half	38.69 m ²	416.45 ft ²	\$ 33,900
Globus Full	38.69 m ²	416.45 ft ²	\$ 74,900
Kuubic - Blossom Economic	10.87 m ²	116.95 ft ²	\$ 15,412
Kuubic - Blossom with floor	10.87 m ²	116.95 ft ²	\$ 19,225
Kuubic - Cedar Economic	22.79 m ²	245.31 ft ²	\$ 22,915
Kuubic - Cedar with floor	22.79 m ²	245.31 ft ²	\$ 30,541
Kuubic - Aspen Economic	22.55 m ²	242.73 ft ²	\$ 24,872
Kuubic - Aspen with floor	22.55 m ²	242.73 ft ²	\$ 32,498
Kuubic - Cherry Economic	34.72 m ²	373.67 ft ²	\$ 30,566
Kuubic - Cherry with floor	34.72 m ²	373.67 ft ²	\$ 42,005
Kuubic - Maple Economic	34.48 m ²	371.09 ft ²	\$ 32,207
Kuubic - Maple with floor	34.48 m ²	371.09 ft ²	\$ 43,646
Kuubic - Oak Economic	34.07 m ²	366.67 ft ²	\$ 33,873
Kuubic - Oak with floor	34.07 m ²	366.67 ft ²	\$ 45,312





www.WonderfulStructures.com

